



1 POLLOCK ROAD

NEWTON MEARNS

www.corumproperty.co.uk





5 | BEDROOMS

1 | BATHROOM

1 | PUBLIC ROOM

A five-bedroom end terraced villa set within a private and expansive corner plot in the popular pocket of Newton Mearns.

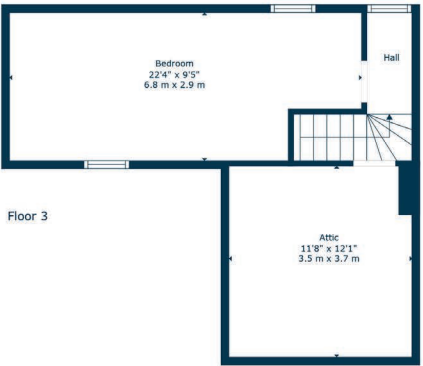
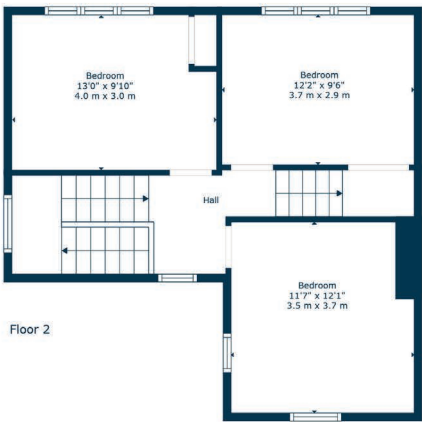
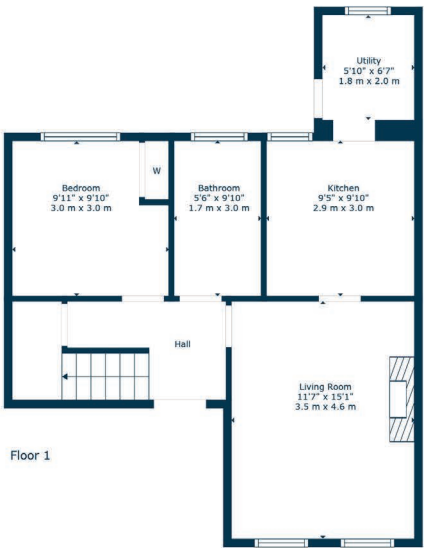
Traditional five-bedroom end terrace family home enjoying a lovely position within this particularly popular pocket of Newton Mearns with excellent local schooling, shopping, amenities and public transport links nearby. Offering the perfect blend of comfort, space, and functionality with generous layout and thoughtfully planned living areas, ideal for families looking for a home to grow into for years to come.

The accommodation in brief extends to traditional style hallway with storage, lounge, kitchen with utility room and access to gardens at rear. Double bedroom and bathroom. The first floor gives access to generous principal bedroom with storage, two further well-proportioned bedrooms. The second floor has further bedroom with ample storage. The specification includes a system of gas central heating and double glazing.

Externally the property is set within private and expansive corner plot which is level and easily maintained garden grounds with lawned and patio areas. Ample driveway space to the front leading to timber garage.

The floor plan shall provide you with a detailed layout of this versatile and well laid out home however, we recommend viewing to appreciate the space and convenient setting that is on offer.





Newton Mearns is one of the most sought after suburbs within the south side of Glasgow. The property is superbly placed for a wide range of amenities and indeed nationally recognised schooling. The property is a short distance away from excellent shopping at The Avenue at Mearns Cross and Greenlaw Village. There are an abundance of sports and recreational facilities found within the district which include excellent golf courses, parks, tennis clubs and there are a variety of country pursuits found nearby. Local train stations include Patterton Station and Whitecraigs Station.

NM4656 | Sat Nav: 1 Pollock Road, Newton Mearns, G77 6DH

For the full home report visit www.corumproperty.co.uk

* All measurements and distances are approximate Floorplans are for illustration purposes and may not be to scale.



WE'RE **SOLD** ON
YOUR FUTURE



Corum Newton Mearns
134 Ayr Road, Newton Mearns, G77 6EG

Tel: 0141 639 5888

Email: n.mearns@corumproperty.co.uk

www.corumproperty.co.uk