



26 THE BEECHES

AYR ROAD, NEWTON MEARNs

www.corumproperty.co.uk





2 | BEDROOMS

2 | BATHROOMS

1 | PUBLIC ROOM

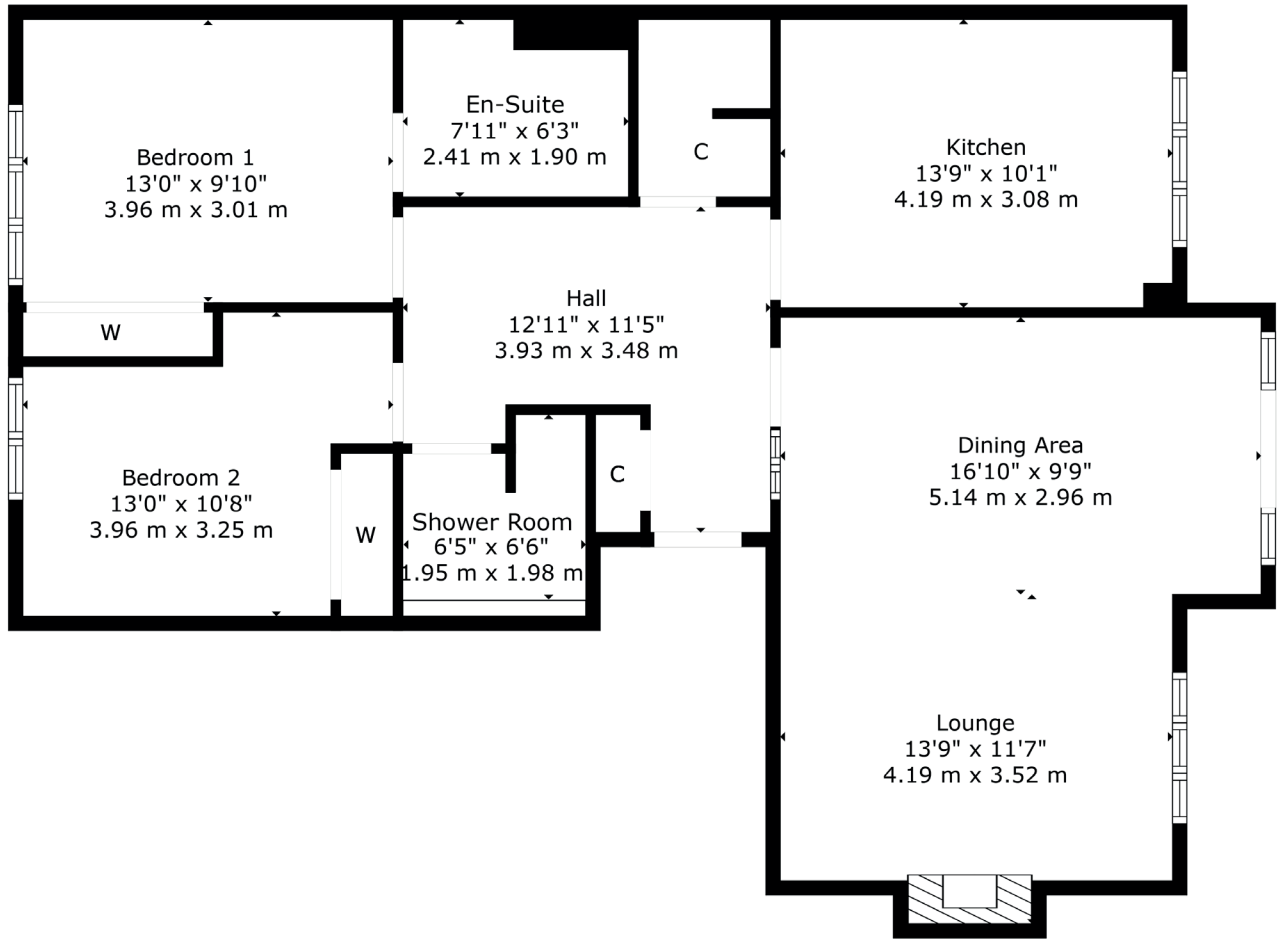
A lovely ground floor apartment set within a popular residential development

This lovely ground floor apartment enjoys a quiet and private location within this popular residential development.

Entered via secure buzzer entry system and well-maintained residents' hallway, the complete accommodation comprises: spacious reception hallway with storage adjacent, fantastic open plan lounge/dining room with rear facing Paris balcony, spacious dining kitchen with a range of wall and base mounted units, lovely principal bedroom with fitted storage and en-suite shower room, second good double bedroom with fitted storage and modern main shower room. The specification of the property includes a system of gas central heating, upgraded double glazing and overall, the subjects are well presented and decorated throughout.

Externally the property is set within well maintained residents' gardens.





Newton Mearns is one of the most sought after suburbs within the south side of Glasgow. The property is superbly situated for a wide range of amenities and indeed nationally recognised schooling. The property is a short distance away from excellent shopping at The Avenue at Mearns Cross and Greenlaw Village. There are an abundance of sports and recreational facilities found within the district which include excellent golf courses, parks, tennis clubs and there are a variety of country pursuits found nearby at Hazeldene. Local train stations include Whitecraigs Station and Patterton Station.

NM4657 | Sat Nav: 26 The Beeches, Ayr Road, Newton Mearns, G77 6AZ

For the full home report visit www.corumproperty.co.uk

* All measurements and distances are approximate Floorplans are for illustration purposes and may not be to scale.



WE'RE **SOLD** ON
YOUR FUTURE



Corum Newton Mearns
134 Ayr Road, Newton Mearns, G77 6EG

Tel: 0141 639 5888

Email: n.mearns@corumproperty.co.uk

www.corumproperty.co.uk