



**21 FOWLIS DRIVE**

NEWTON MEARNS

[www.corumproperty.co.uk](http://www.corumproperty.co.uk)







**4 | BEDROOMS**

**2 | BATHROOMS**

**1/2 | PUBLIC ROOMS**

**An extended detached villa set within landscaped gardens**

This lovely, detached villa has been thoughtfully extended, reconfigured and upgraded to deliver a great family home. Well presented and finished throughout, the subjects are set within landscaped gardens and present an easy move to the local marketplace.

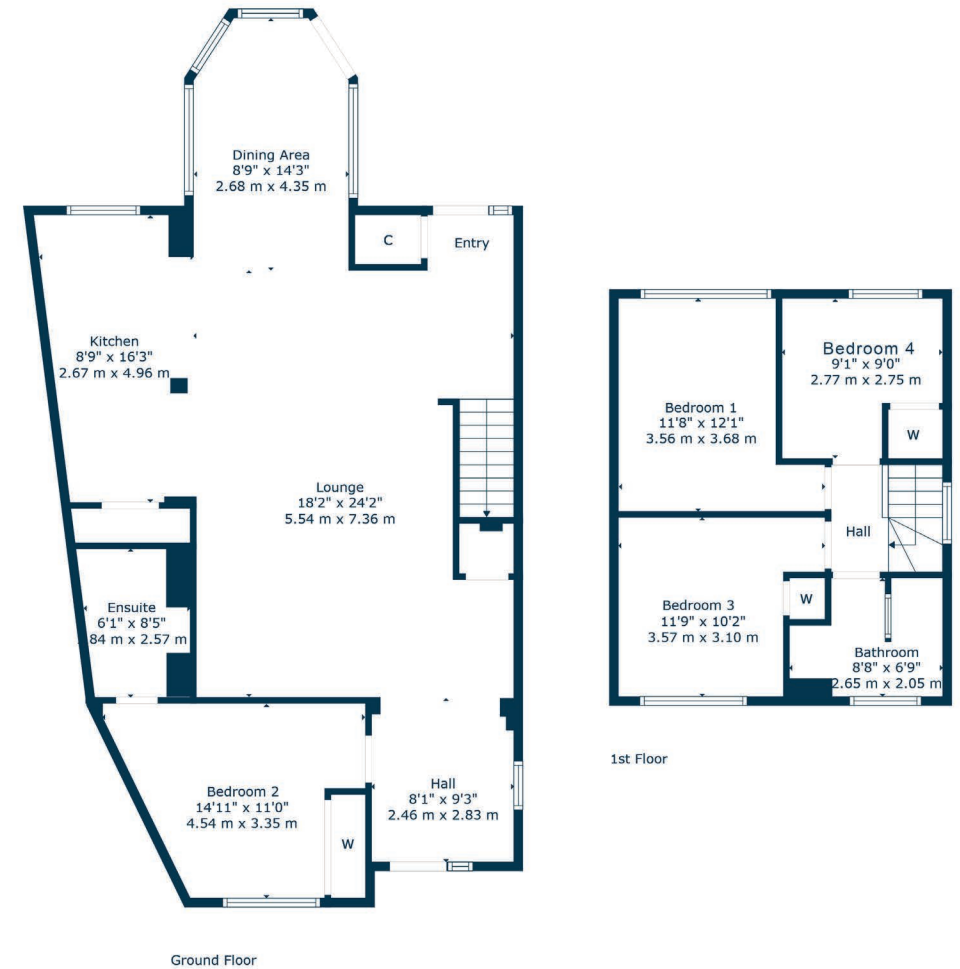
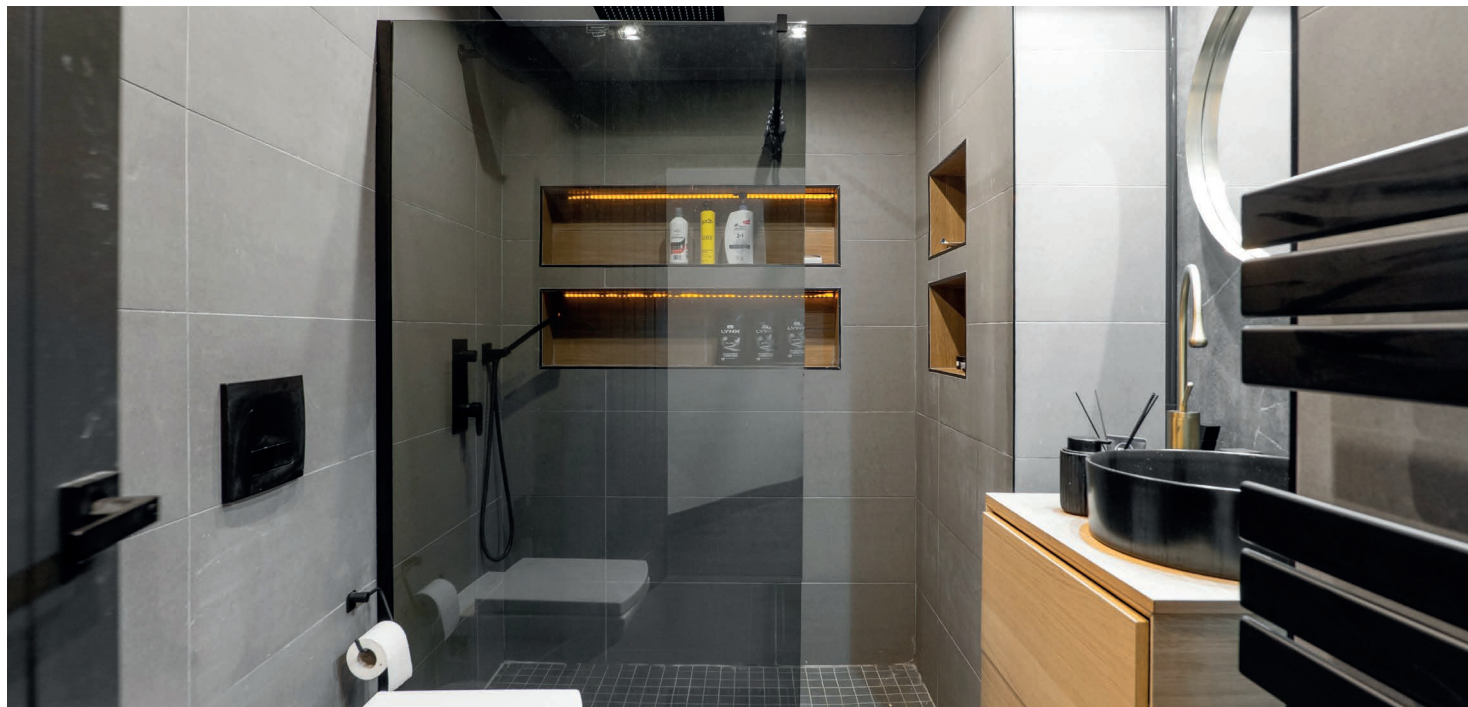
Ground floor accommodation extends to entrance hallway, ground floor principal bedroom with fitted wardrobes and contemporary en-suite shower adjacent, fantastic lounge/family room open plan to dining area and access to gardens. Additional store cupboard adjacent to rear door. Contemporary fitted kitchen with feature island, range of quality appliances, and complementary work surfaces. Upstairs gives access to double bedroom with fitted storage, third double bedroom, good fourth bedroom and contemporary main family bathroom. Additional storage provided by way of attic space. The specification of the property includes a system of gas central heating, double glazing, stylish tiling and lighting throughout, modern floor coverings and overall, the subjects are well presented and decorated throughout.

Externally the property is set within easily maintained landscaped gardens with Monoblock and decked areas. Further Monoblock driveway providing ample vehicular parking with additional decked/seating area.









Situated within a highly sought after pocket of Newton Mearns, the property is superbly placed for a wide range of amenities and indeed nationally recognised schooling. A wide variety of restaurants, supermarkets and retailers can be found at the nearby Mearns Cross Shopping Centre and Greenlaw Village, and there are a range of sports and leisure activities found within the district including parks, health clubs, gyms and golf courses. Excellent local transport links providing swift access to the city centre and beyond are also close at hand with Whitecraigs Station being the nearest.

**NM4660** | Sat Nav: 21 Fowlis Drive, Newton Mearns, G77 6JL

For the full home report visit [www.corumproperty.co.uk](http://www.corumproperty.co.uk)

\* All measurements and distances are approximate Floorplans are for illustration purposes and may not be to scale.





WE'RE **SOLD** ON  
YOUR FUTURE



Corum Newton Mearns  
134 Ayr Road, Newton Mearns, G77 6EG

**Tel:** 0141 639 5888

**Email:** [n.mearns@corumproperty.co.uk](mailto:n.mearns@corumproperty.co.uk)

[www.corumproperty.co.uk](http://www.corumproperty.co.uk)