



10A WESTON TERRACE

LARGS

www.corumproperty.co.uk





1 | BEDROOM

1 | BATHROOM

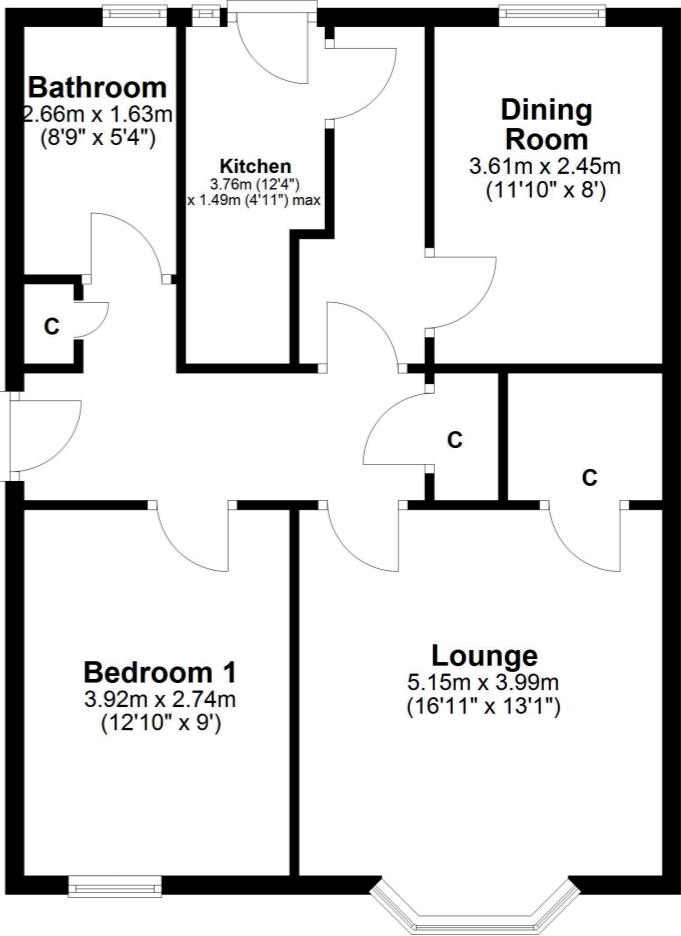
1 | PUBLIC ROOM

This wonderful traditional ground floor flat offers wonderful views to local countryside and is in close proximity to many of West Kilbride's local amenities. The property has a private terrace & garage to the rear along with garden grounds to the front.

10A Weston Terrace is a lovely traditional ground floor flat with stunning views out to local countryside. West Kilbride is known as the Craft Town and has many shops and amenities close to the flat. The property has private garden grounds along with a garage to the rear of the property.

The wonderful accommodation on offer extends to a welcoming reception hallway, lounge with feature bay window providing fabulous views, dining room with aspects over the rear terrace, double bedroom with countryside views, modern fitted kitchen, and modern bathroom. The property has gas central heating and double glazing. The main gardens are to the front of the home, a terrace to the rear and a private garage which can be accessed from the garden & rear lane. Early viewing is highly recommended to appreciate the accommodation and location on offer.





West Kilbride, which incorporates Seamill, is a small village which lies South of Largs and looks across the Firth of Clyde over to the Isle of Arran. The village has many amenities which include a primary school, championship links golf course, bowling and tennis clubs, leisure, coffee and shopping opportunities and benefits from its position as Craft Town Scotland with a range of independent studios and shops as well as the Barony Centre hosting exhibitions and events. The village is well positioned for accessing all major road networks, is approximately 40 minutes from both Prestwick and Glasgow International airports and has a train station which provides a frequent service to Largs and Glasgow.

LA2102 | Sat Nav: 10 Weston Terrace, West Kilbride, KA23 9JX

For the full home report visit www.corumproperty.co.uk

* All measurements and distances are approximate Floorplans are for illustration purposes and may not be to scale.



WE'RE **SOLD** ON
YOUR FUTURE



Corum Largs
66 Main Street, Largs, KA30 8AL

Tel: 01475 675 001

Email: largs@corumproperty.co.uk

www.corumproperty.co.uk