



UPPER CONVERSION, 32 MARYWOOD SQUARE

STRATHBUNGO

[www.corumproperty.co.uk](http://www.corumproperty.co.uk)





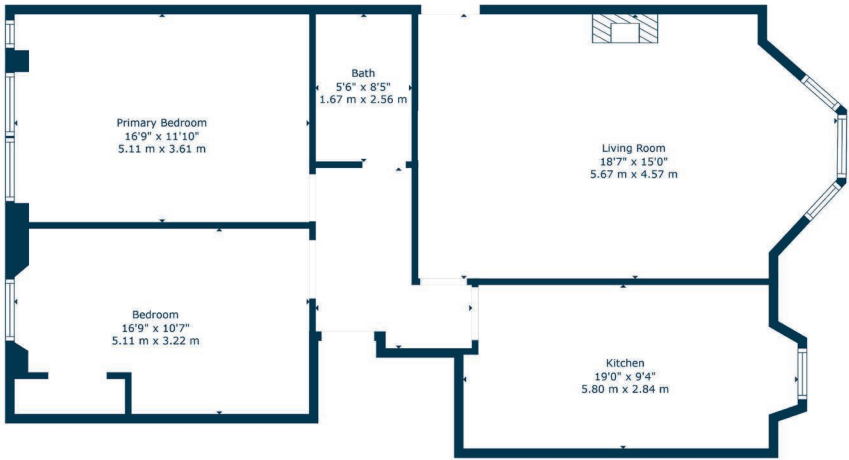
2 | BEDROOMS  
1 | BATHROOM  
1 | PUBLIC ROOM

Occupying a bright top floor position in a blonde sandstone townhouse building, a spectacular two bedroom upper conversion, presented to the market in excellent order in the heart of Strathbungo.

- Upper conversion
- An array of original features
- Communal gardens and private parking
- 2 double bedrooms
- Impressive lounge with wood burner
- Modern kitchen and bathroom
- Central Strathbungo location

Amenities

32 Marywood Square is in the popular Southside community of Strathbungo where independent restaurants, shops, bars and coffee houses are all in close proximity. Queen's Park is 300 yards away providing excellent recreational space, tennis courts, a playpark and a recently regenerated bandstand/arena. Pollokshields West and Queens Park train stations are both within half a mile of the front door whilst frequent bus services are available around the corner on Pollokshaws Road.



Sat Nav:  
Upper Conversion, 32 Marywood Square,  
Strathbungo, G41 2BJ

SS5116

\*All measurements and distances are approximate.  
Floorplans are for illustration purposes and may  
not be to scale.

For the full home report visit  
[www.corumproperty.co.uk](http://www.corumproperty.co.uk)





WE'RE **SOLD** ON  
YOUR FUTURE



Corum Shawlands  
247 Kilmarnock Road, Shawlands, G41 3JF

**Tel:** 0141 636 7588

**Email:** [shawlands@corumproperty.co.uk](mailto:shawlands@corumproperty.co.uk)

[www.corumproperty.co.uk](http://www.corumproperty.co.uk)