



1/2, 39 LOCHLEVEN ROAD
BATTLEFIELD

www.corumproperty.co.uk



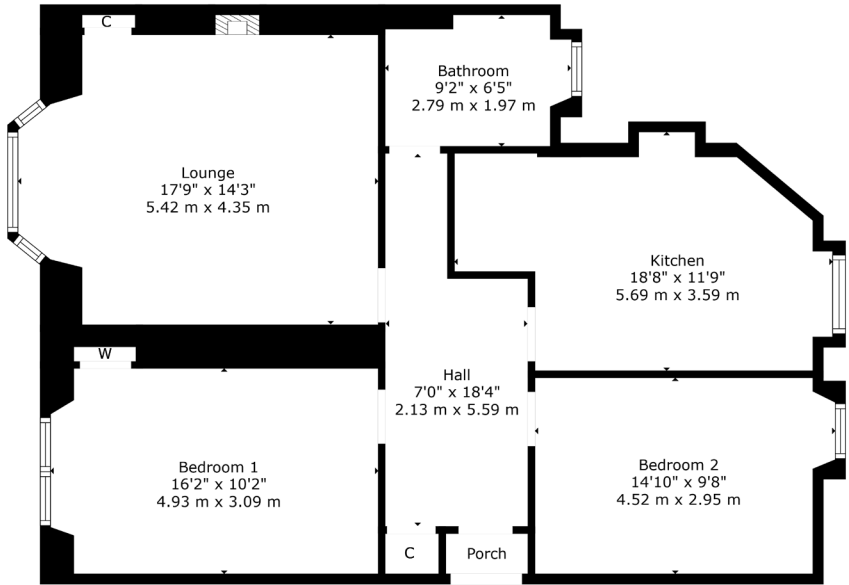
2 | BEDROOMS
1 | BATHROOM
1 | PUBLIC ROOM

Occupying a particularly bright first floor position in an admired Southside address, this excellent flat has impressive fitted storage and a large dining sized kitchen. Available for a speedy entry date, the property has been very well cared for and upgraded by our clients.

- Bright first floor tenement home
- Several amenities in close proximity
- Large bay windowed lounge to front
- Two good double sized bedrooms
- Fitted dining kitchen to rear
- Double glazed and gas heating

Amenities

39 Lochleven Road is nearby numerous independent coffee houses, restaurants, bars and shops in Battlefield including Sainsburys, Marks & spencer and Starbucks. Recreational pursuits are available at Queens Park or at the Battlefield Community Garden around the corner where local residents regularly socialise. Mount Florida train station is approximately 500 yards away providing several services an hour into Glasgow central station alongside bus routes on Battlefield Road.



Sat Nav:
39 Lochleven Road, Battlefield, G42 9QT

SS5141

*All measurements and distances are approximate.
Floorplans are for illustration purposes and may not be to scale.

For the full home report visit
www.corumproperty.co.uk



WE'RE **SOLD** ON
YOUR FUTURE



Corum Shawlands
247 Kilmarnock Road, Shawlands, G41 3JF

Tel: 0141 636 7588

Email: shawlands@corumproperty.co.uk

www.corumproperty.co.uk