



## FLAT 4, JOHN NEILSON INSTITUTE

PAISLEY

[www.corumproperty.co.uk](http://www.corumproperty.co.uk)





2 | BEDROOMS  
2 | BATHROOMS  
1 | PUBLIC ROOM

A fabulous duplex apartment set within Paisleys historic John Neilon Institute.

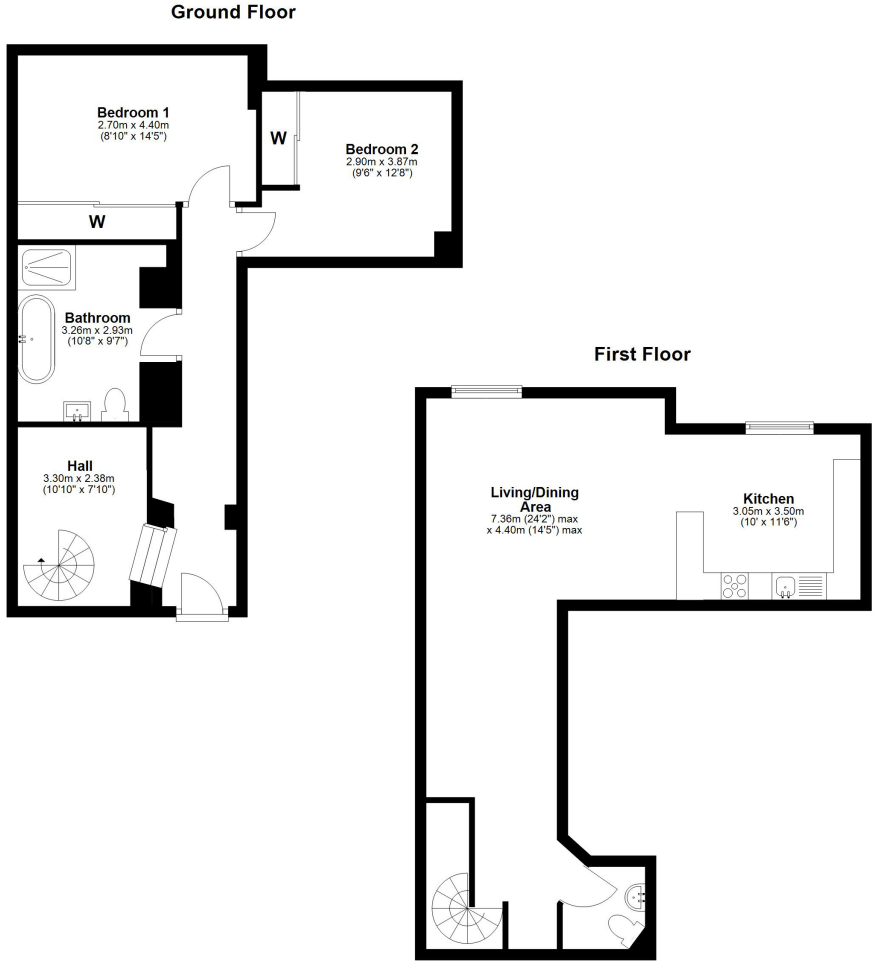
This spectacular duplex, set within an A-Listed structure, a legacy of famed Glasgow architect Charles Wilson, presents a rare chance to own a piece of architectural history. A careful, respectful conversion maintains the buildings exceptional character, from the impressive main entrance hall under the iconic dome to the arched windows.

Entry into the apartments main entrance hall which leads to two double bedrooms, both of excellent size and both fitted with sliding door wardrobes. The main bathroom features a four-piece suite with a freestanding bath, large shower unit, a vanity basin, and a WC..

Off the entrance hall, a beautiful spiral staircase guides you up to the main living space of the apartment. A large upper landing opens onto a magnificent lounge and dining area, where arch windows provide lovely views over Paisley town. The living space is open plan and flows seamlessly into a modern, open-plan kitchen outfitted with high-spec appliances including a hob, oven, dishwasher, and washing machine, a peninsula breakfast bar creates a natural separation. A modern two-piece w.c serves the upper level.

The entire home is heated by gas central heating and has been finished to a wonderful standard, with modern fixtures and fittings throughout. Unique perks include significant attic storage and private access to the building's iconic dome both accessed via drop down ladder.

Outside, the property is surrounded by beautifully kept gardens and offers resident parking.



Sat Nav:  
John Neilson Institute, Paisley, PA1 2DE

BW2710

\*All measurements and distances are approximate.  
Floorplans are for illustration purposes and may not be to scale.

For the full home report visit  
[www.corumproperty.co.uk](http://www.corumproperty.co.uk)



WE'RE **SOLD** ON  
YOUR FUTURE



Corum Bridge of Weir  
2 Windsor Place, Main Street, Bridge Of Weir, PA11 3AF

T: 01505 691 400

E: [bridgeofweir@corumproperty.co.uk](mailto:bridgeofweir@corumproperty.co.uk)

[www.corumproperty.co.uk](http://www.corumproperty.co.uk)