



**1 BLUEBELL DRIVE**

NEWTON MEARNS

[www.corumproperty.co.uk](http://www.corumproperty.co.uk)







**4 | BEDROOMS**

**2 | BATHROOMS**

**2 | PUBLIC ROOMS**

**A modern end terrace townhouse set within larger style gardens.**

This modern end terrace townhouse enjoys a popular location within this sought after residential development. Constructed by respected builder Stewart Milne, the subjects are set within larger style garden grounds and present a fantastic opportunity to the local marketplace.

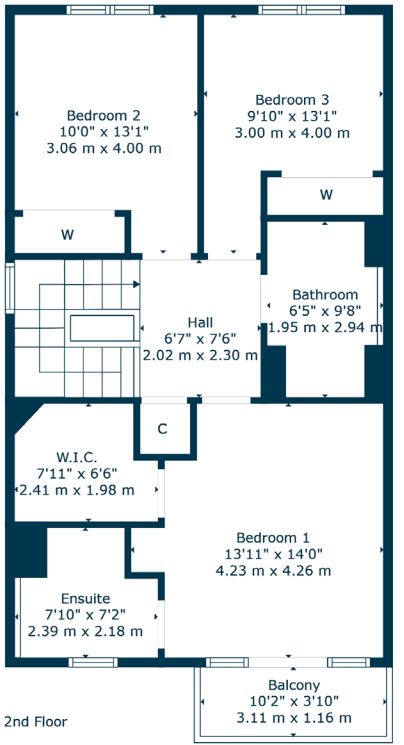
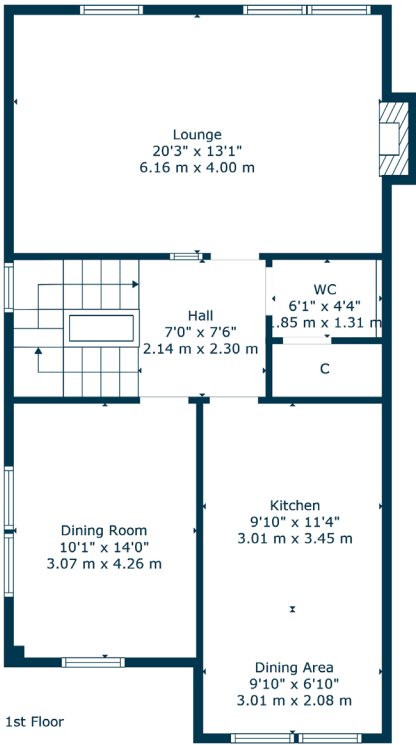
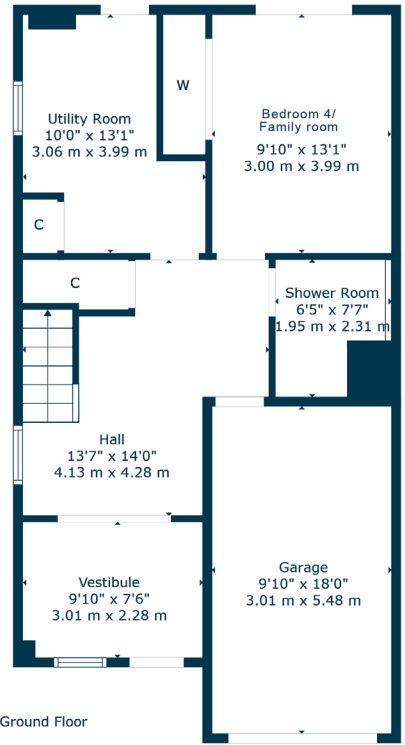
Ground floor accommodation extends to traditional style reception hallway with WC adjacent, lovely fourth bedroom (family bedroom) with access to rear gardens, spacious laundry/utility with integral access to garage, fitted with power and light. First floor a bright and spacious landing area gives access to rear facing lounge, lovely formal dining room with great open aspects, and modern fitted dining kitchen with a range of wall and base mounted units. This level also benefits from useful storage and WC. The top floor provides fantastic principal bedroom with en-suite dressing room, shower room and balcony with great aspects across the district. Two further good bedrooms with fitted wardrobes and modern main family bathroom. The specification of the property includes a system of gas central heating, double glazing and the subjects are well presented and decorated throughout.

Externally the property is set within larger style garden grounds easily maintained by virtue of decked and lawned areas. Monoblock drive to front providing vehicular parking.









Newton Mearns is one of the most sought after suburbs within the south side of Glasgow. The property is superbly placed for a wide range of amenities and nationally recognised schooling. Within a short distance you can find excellent shopping at The Avenue, Mearns Cross, and an abundance of sports and recreational facilities including excellent golf courses, parks and tennis clubs. The local train stations include Whitecraigs Station and Patterson Station, which is a short walk away.

**NM4667** | Sat Nav: 1 Bluebell Drive, Newton Mearns, G77 6FN

For the full home report visit [www.corumproperty.co.uk](http://www.corumproperty.co.uk)

\* All measurements and distances are approximate Floorplans are for illustration purposes and may not be to scale.





WE'RE **SOLD** ON  
YOUR FUTURE



Corum Newton Mearns  
134 Ayr Road, Newton Mearns, G77 6EG

**Tel:** 0141 639 5888

**Email:** [n.mearns@corumproperty.co.uk](mailto:n.mearns@corumproperty.co.uk)

[www.corumproperty.co.uk](http://www.corumproperty.co.uk)