



10 WHITELEE CRESCENT

NEWTON MEARNS

www.corumproperty.co.uk





4 | BEDROOMS

2 | BATHROOMS

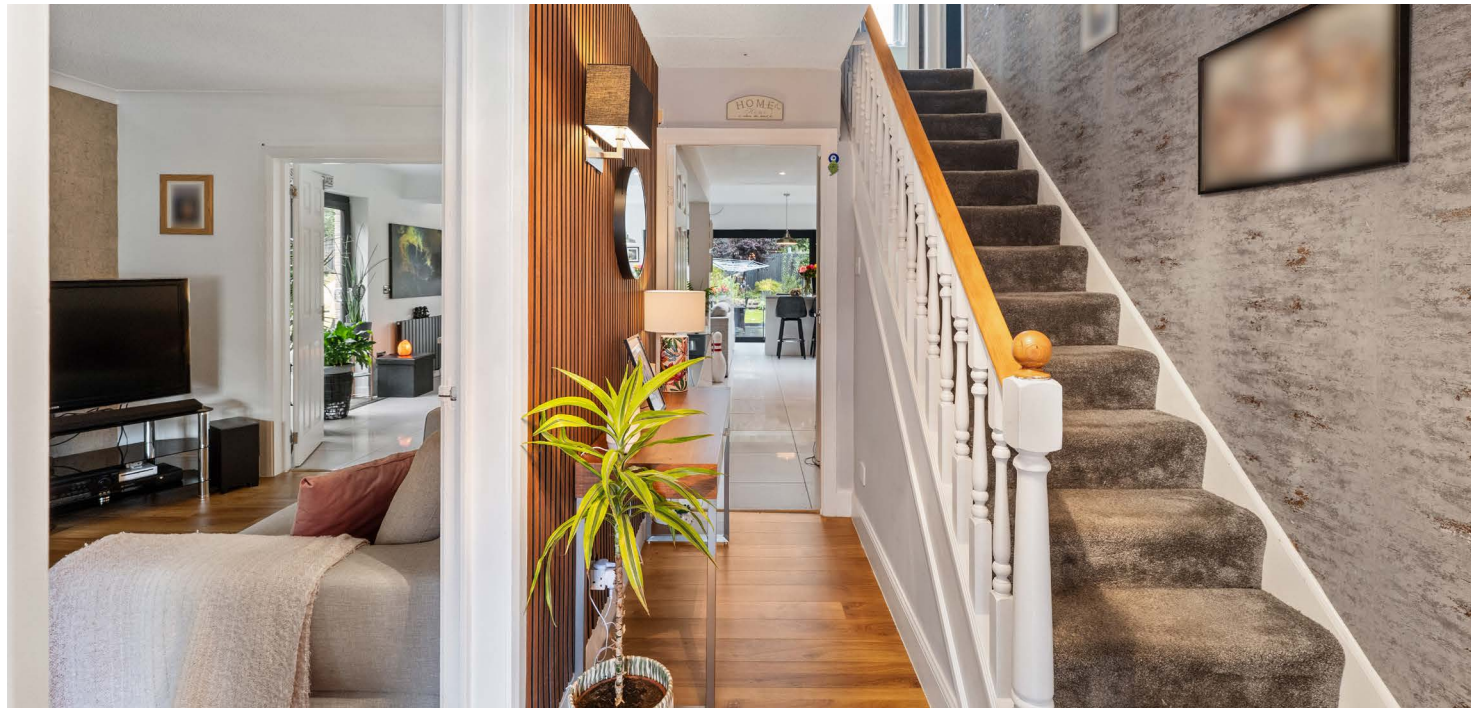
3 | PUBLIC ROOMS

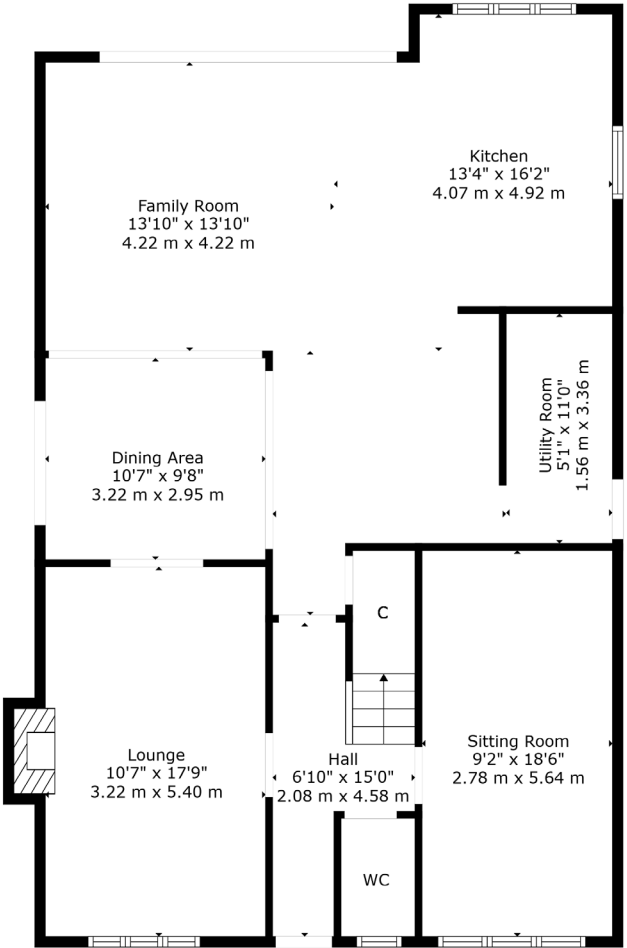
An extended detached villa set within lovely garden grounds

This modern detached villa enjoys a popular location within this sought after pocket of Newton Mearns. Set within mature, established and larger style corner garden grounds, the subjects have been significantly enhanced by way of a fantastic rear extension to deliver a great family home.

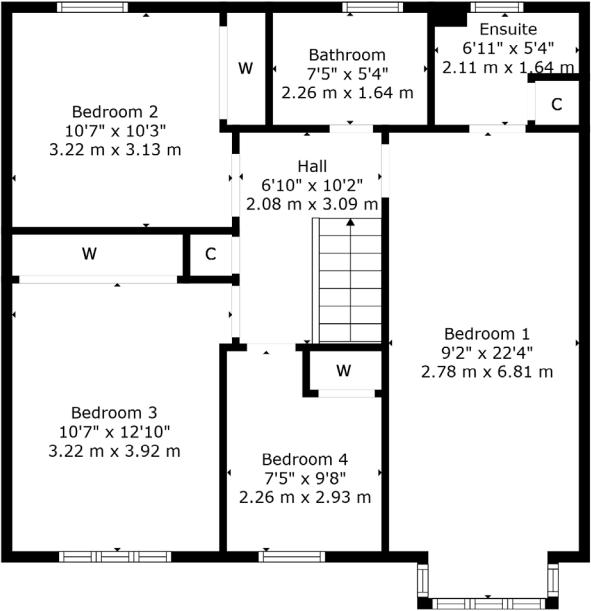
Ground floor accommodation extends to entrance reception hallway with WC adjacent, lovely front facing formal lounge with feature fireplace, and the rear of the property has been significantly extended and enhanced to provide a wonderful open plan living/dining/kitchen area. The kitchen displays a range of wall and base mounted units, integrated appliances, central island, all with complementary stone worktops, separate laundry/utility area and there is access via bi-fold doors to landscaped rear gardens. The ground floor is completed by a lovely garage conversion providing a further sitting room/home office/occasional bedroom. Upstairs gives access to generous principal bedroom which runs the full depth of the house, with contemporary en-suite shower room and storage, three further good bedrooms with fitted storage and modern main family bathroom. Additional storage provided by way of attic space. The specification of the property includes a system of gas central heating, double glazing, stylish tiling and floor coverings, and the subjects are well presented and decorated throughout.

Externally the property is set within larger style corner garden grounds. The gardens have been landscaped and are mature, established and retain a high degree of privacy. Patio area and composite deck area. External garden shed. Monoblock driveway to front providing vehicular parking.





Ground Floor



1st Floor

Situated within a highly sought after pocket of Newton Mearns, the property is superbly placed for a wide range of amenities and indeed nationally recognised schooling. A wide variety of restaurants, supermarkets and retailers can be found at the nearby Mearns Cross Shopping Centre and Greenlaw Village, and there are a range of sports and leisure activities found within the district including parks, health clubs, gyms and golf courses. Excellent local transport links providing swift access to the city centre and beyond are also close at hand with Patterton Station being the nearest.

NM4669 | Sat Nav: 10 Whitelee Crescent, Newton Mearns, G77 6UH

For the full home report visit www.corumproperty.co.uk

* All measurements and distances are approximate Floorplans are for illustration purposes and may not be to scale.



WE'RE **SOLD** ON
YOUR FUTURE



Corum Newton Mearns
134 Ayr Road, Newton Mearns, G77 6EG

Tel: 0141 639 5888

Email: n.mearns@corumproperty.co.uk

www.corumproperty.co.uk