



49 INVERGARRY DRIVE

THORNLIEBANK

www.corumproperty.co.uk





3 | BEDROOMS

2 | BATHROOMS

2 | PUBLIC ROOMS

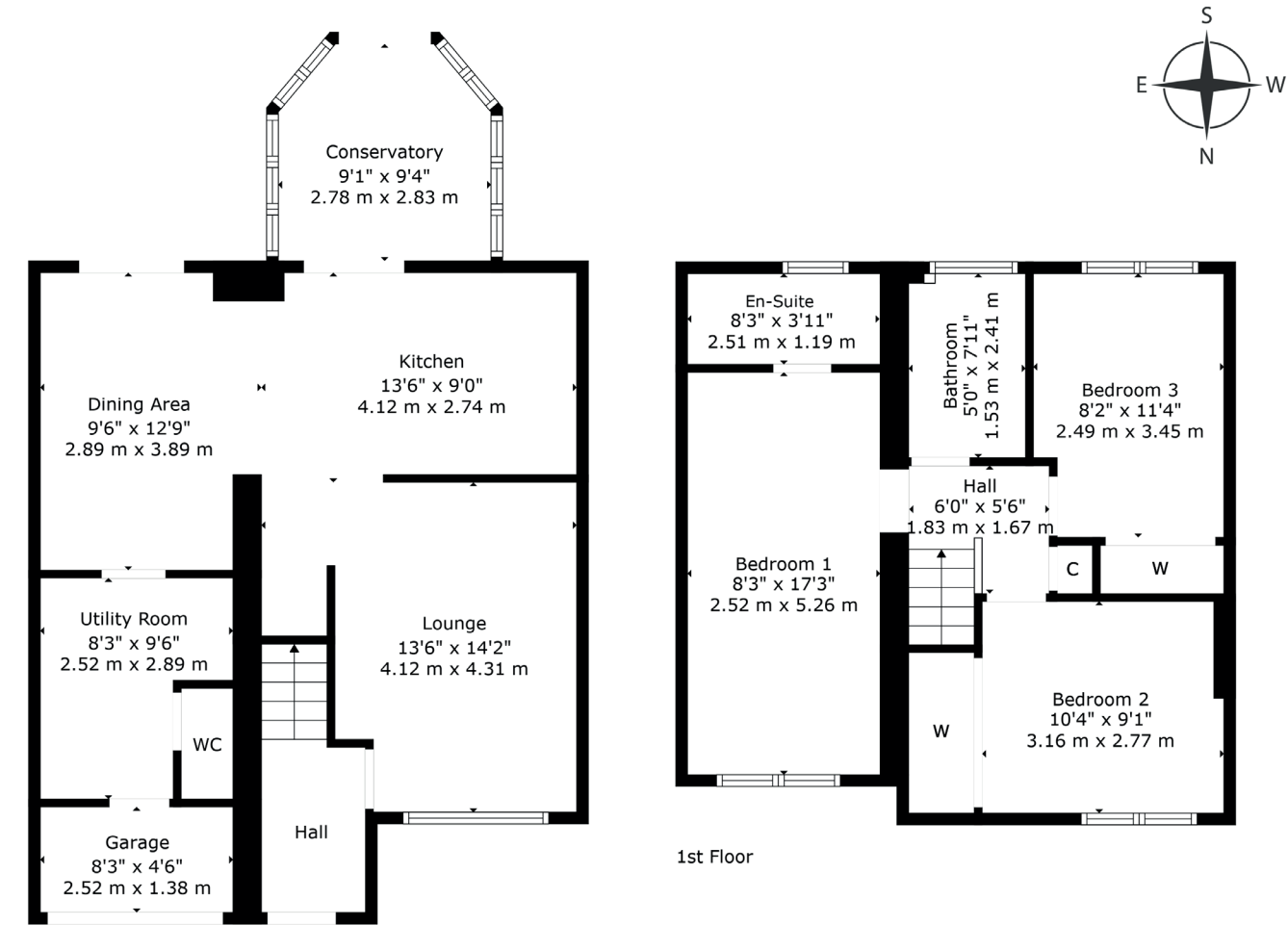
A beautifully appointed semi detached family home enjoying a prominent and pleasant position with this highly sought after development.

The property has been extended and reconfigured offering a vast amount of flowing family space with stylish, contemporary finishing. Enhanced and reconfigured over two levels the specification includes a gas central heating system, double glazed windows and doors, and modern kitchen and bathrooms.

The light and airy accommodation in brief extends to traditional reception hallway, exceptional sized lounge, conservatory, open plan kitchen with a range of modern base, wall mounted units with dining area, a utility room and cloakroom/WC complete the ground floor accommodation. The upper level provides access to principal bedroom with en-suite. Two further well proportioned double bedrooms with ample storage and main family bathroom.

Externally the landscaped garden grounds to the rear are magnificent, south facing and extremely private, offering decked patio areas and have been laid for ease of maintenance providing an ideal space for outside enjoyment. The established gardens have a pleasant mix of mature trees and shrub borders giving all year round interest. Driveway to the front offering parking for multiple vehicles.





Perfectly placed to take advantage of all local amenities in nearby Giffnock, Newton Mearns and Thornliebank. The development is perfectly placed for a variety of amenities which include Mearns Cross Shopping Centre which is a short drive away, Greenlaw Village which offers Waitrose and excellent further shopping facilities, nearby motorway links and Deaconsbank Golf course and Patterton Train Station are a short distance away. An abundance of sports and leisure facilities are available within East Renfrewshire including David Lloyd Sports Club, Whitecraigs Golf Club, Giffnock and Whitecraigs Tennis Clubs and Rouken Glen Park.

NM4672 | Sat Nav: 49 Invergarry Drive, Thornliebank, G46 8UA

For the full home report visit www.corumproperty.co.uk

* All measurements and distances are approximate Floorplans are for illustration purposes and may not be to scale.



WE'RE **SOLD** ON
YOUR FUTURE



Corum Newton Mearns
134 Ayr Road, Newton Mearns, G77 6EG

Tel: 0141 639 5888

Email: n.mearns@corumproperty.co.uk

www.corumproperty.co.uk