



0/1, 289 KENMURE STREET

POLLOKSHIELDS

www.corumproperty.co.uk



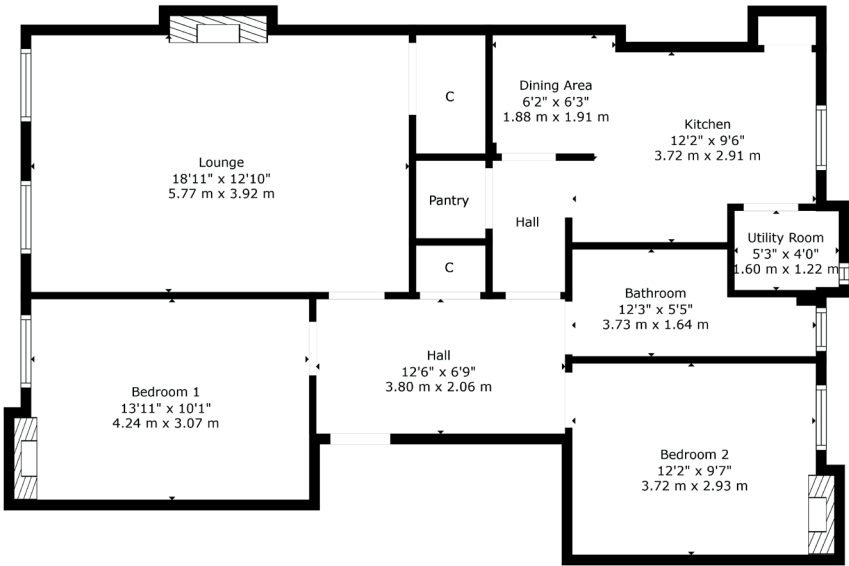
2 | BEDROOMS
1 | BATHROOM
1 | PUBLIC ROOM

Occupying a level ground floor position in Pollokshields, this two-bedroom flat is found in a listed building designed by Alexander "Greek" Thomson. The property retains a number of traditional traits combined with modern fittings making early internal inspection is imperative.

- Level ground floor position
- Alexander Thomson building
- Two double sized bedrooms
- Bespoke dining sized kitchen
- Beautiful period features
- Private front garden
- Thriving amenities nearby

Amenities

289 Kenmure Street is within walking distance of various amenities in Pollokshields and Strathbungo where coffee houses, restaurants, bars and boutiques jostle for position. Recreational pursuits within the area are available at Queens Park, Maxwell Park, Pollok Country Park and at Titwood Tennis Club. Pollokshields East or West train stations are within 500 yards of the front door, Shields Road underground station is only one mile away and the M77 connects the Southside of Glasgow to Scotland's motorway network.



Sat Nav:
289 Kenmure Street, Pollokshields, G41 2QX

SS5132

*All measurements and distances are approximate.
Floorplans are for illustration purposes and may not be to scale.

For the full home report visit
www.corumproperty.co.uk



WE'RE **SOLD** ON
YOUR FUTURE



Corum Shawlands
247 Kilmarnock Road, Shawlands, G41 3JF

Tel: 0141 636 7588

Email: shawlands@corumproperty.co.uk

www.corumproperty.co.uk