



**2/1, 6 MOUNT STUART STREET**  
**SHAWLANDS**

[www.corumproperty.co.uk](http://www.corumproperty.co.uk)







**3 | BEDROOMS**

**1 | BATHROOM**

**1 | PUBLIC ROOM**

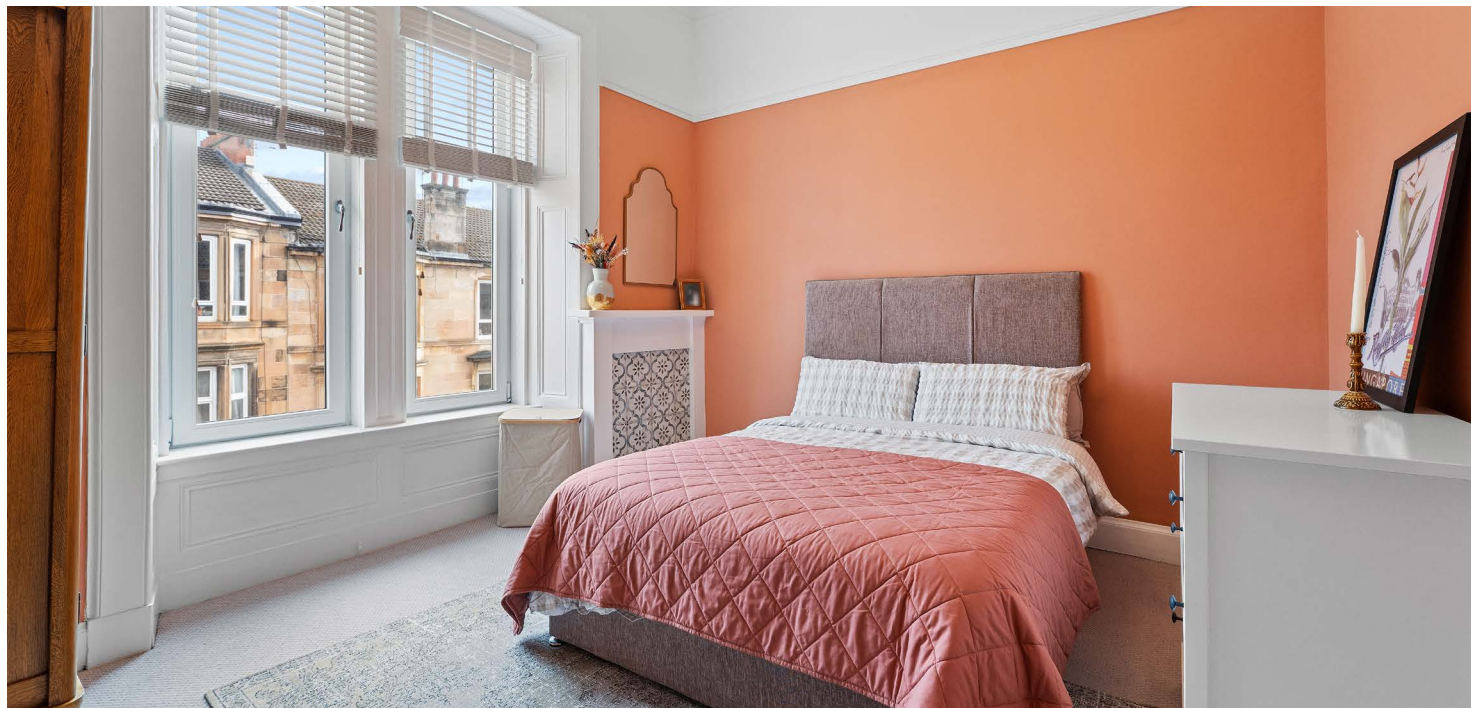
**This stunning top floor home is found in the heart of Shawlands only 500 yards from Queen's Park.**

Occupying a bright top floor position in the centre of Shawlands, this four apartment townflat delivers exceptional accommodation and first class finishes. The property is nearby Queen's Park, numerous amenities and regular public transport options.

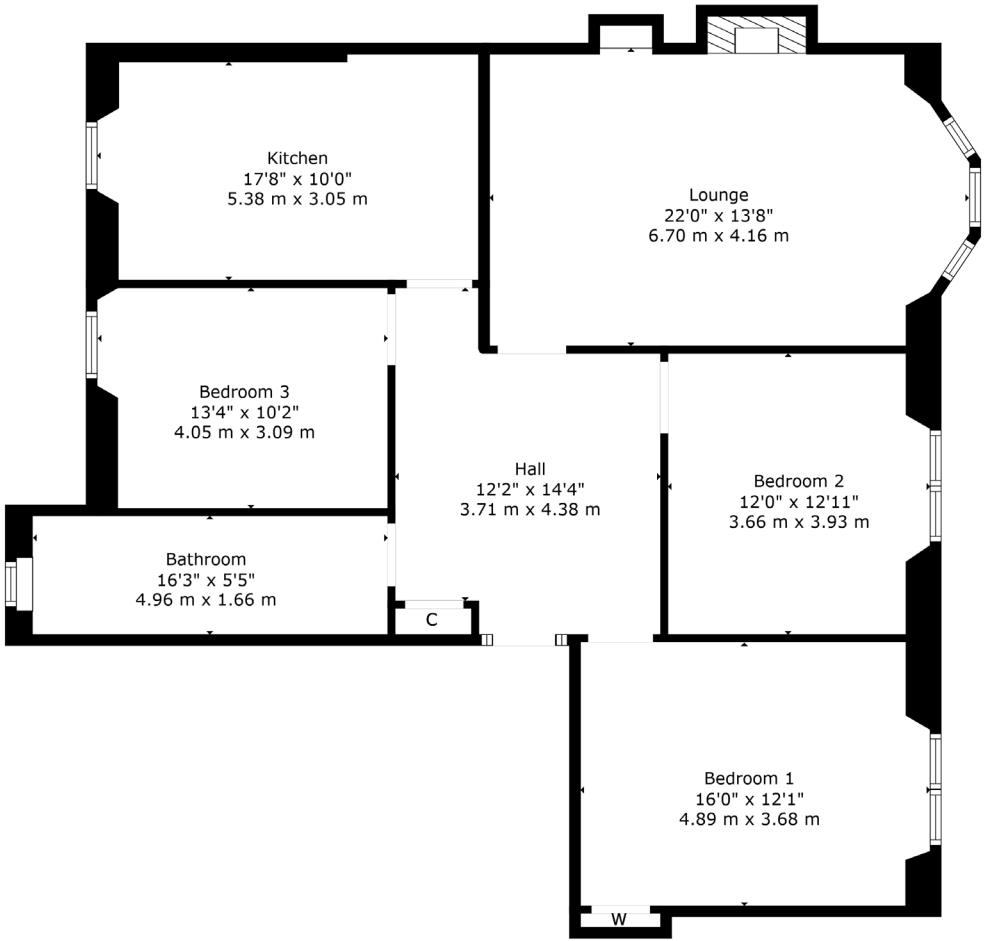
The accommodation in brief; resident's stairwell to top floor, storm door and internal door access into a broad reception hall and a tremendous bay windowed lounge with a decorative fireplace. There are three versatile double bedrooms, the principal of which with bespoke storage cupboards whilst a beautiful bathroom suite has been carefully designed to include a stand-alone bath separate to a walk-in double shower. A fitted dining sized kitchen provides ample space for table and chairs and fitted cabinetry.

The specification includes an audio door entry system, gas central heating and double glazed windows. A number of traditional features are in still situ including ceiling plasterwork, two fire surrounds and moulded woodwork. The rear garden is shared and accessed from the common close and the building is factored by Macfie & Co based in Mount Florida.









6 Mount Stuart Street is in close proximity to thriving shops, bars, coffee houses, bakeries and restaurants. A Morrisons, a Sainsburys, a Tesco and an M&S store are all within one mile of the property. The fringe of Queen's Park hosts a Farmers' Market on the 1st and 3rd Saturday of each month whilst recreational space, tennis courts and football pitches are available within the park.

**SS5140** | Sat Nav: 6 Mount Stuart Street, Shawlands, G41 3YL

For the full home report visit [www.corumproperty.co.uk](http://www.corumproperty.co.uk)

\* All measurements and distances are approximate Floorplans are for illustration purposes and may not be to scale.





WE'RE **SOLD** ON  
YOUR FUTURE



Corum Shawlands  
247 Kilmarnock Road, Shawlands, G41 3JF

**Tel:** 0141 636 7588

**Email:** [shawlands@corumproperty.co.uk](mailto:shawlands@corumproperty.co.uk)

[www.corumproperty.co.uk](http://www.corumproperty.co.uk)