



GROUND CONVERSION

41 MARYWOOD SQUARE, STRATHBUNGO

www.corumproperty.co.uk



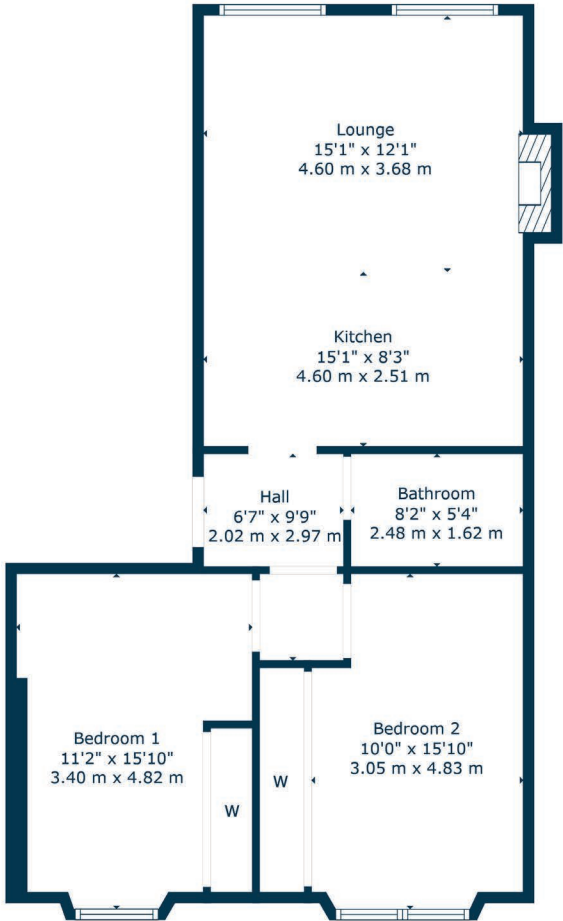
2 | BEDROOMS
1 | BATHROOM
1 | PUBLIC ROOM

Positioned at ground floor level in an attractive sandstone terrace, this two bedroom conversion is found in the bustling Strathbungo district. The building was split some years ago to house three properties all of whom have access to a shared rear garden. This property is available for immediate entry.

- Ground floor townhouse conversion
- Open plan lounge to fitted kitchen
- Two double bedrooms to rear
- Beautifully refurbished bathroom
- Shared garden and garage to rear
- Numerous amenities nearby

Amenities

41 Marywood Square is in the popular Southside community of Strathbungo where independent restaurants, shops, bars and coffee houses are all in close proximity. Queen's Park is approximately 350 yards away providing excellent recreational space, tennis courts, a playpark and a recently regenerated bandstand/arena. Pollokshields West and Queens Park train stations are both within half a mile of the front door whilst numerous bus routes are available on Pollokshaws Road.



Sat Nav:
Ground Conversion, 41 Marywood Square, Strathbungo, G41 2BN

SS5142

*All measurements and distances are approximate. Floorplans are for illustration purposes and may not be to scale.

For the full home report visit
www.corumproperty.co.uk



WE'RE **SOLD** ON
YOUR FUTURE



Corum Shawlands
247 Kilmarnock Road, Shawlands, G41 3JF

Tel: 0141 636 7588

Email: shawlands@corumproperty.co.uk

www.corumproperty.co.uk