



0/1, 108 CAMPHILL AVENUE
LANGSIDE

www.corumproperty.co.uk



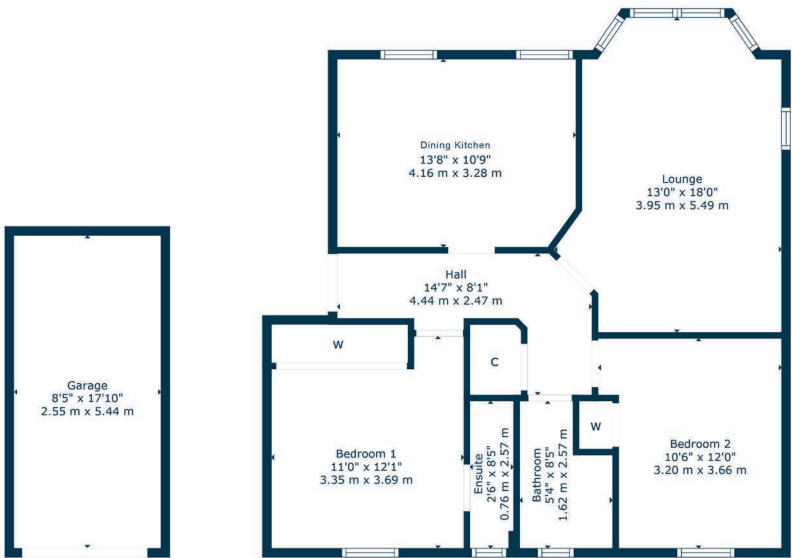
2 | BEDROOMS
2 | BATHROOMS
1 | PUBLIC ROOM

Positioned at elevated ground floor level in an evergreen address, this lovely two bedroom apartment is presented for sale in turnkey condition. The property is nearby Queen’s Park, thriving amenities and regular public transport options.

- Modern ground floor 2 bed flat
- Very popular Southside address
- Principal bedroom with en-suite
- Integrated dining sized kitchen
- Parking space & private garage
- Only 500 yards to Queen’s Park

Amenities

108 Camphill Avenue is in close proximity to thriving shops, bars, coffee houses, bakeries and restaurants. A Morrisons, a Sainsburys, a Tesco and an M&S store are all within one mile of the property. The fringe of Queen’s Park hosts a twice monthly Farmers’ Market whilst recreational space, tennis courts and football pitches are available within the park. Shawlands Civic Square is also nearby, designed to offer a destination for markets, dance, craft events, speakers and debate.



Sat Nav:
0/1, 108 Camphill Avenue, Langside, G41 3DU

SS5143

*All measurements and distances are approximate.
Floorplans are for illustration purposes and may not be to scale.

For the full home report visit
www.corumproperty.co.uk



WE'RE **SOLD** ON
YOUR FUTURE



Corum Shawlands
247 Kilmarnock Road, Shawlands, G41 3JF

Tel: 0141 636 7588

Email: shawlands@corumproperty.co.uk

www.corumproperty.co.uk