



FLAT 3, 29 SPRINGKELL GARDENS

POLLOKSHIELDS

www.corumproperty.co.uk



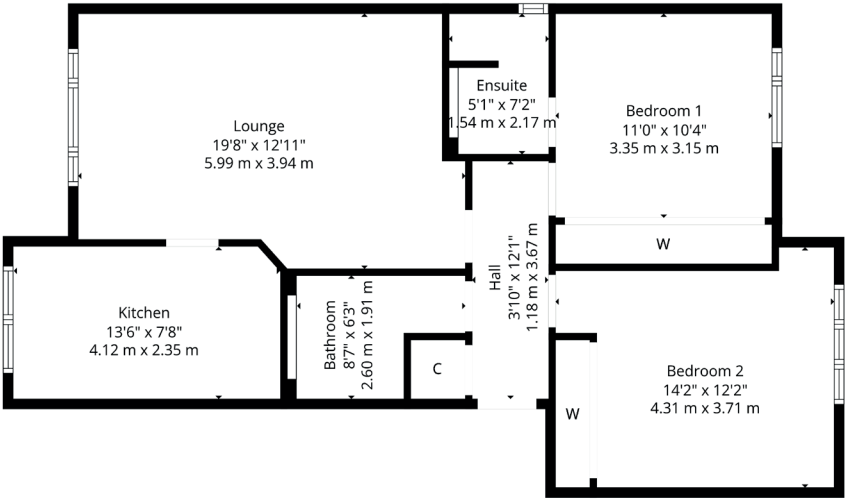
2 | BEDROOMS
2 | BATHROOMS
1 | PUBLIC ROOM

Positioned in an established development of similar aged homes, this stunning first floor flat originally dates from the 1990s. Our client has replaced the boiler, the windows, the radiators, the kitchen and the bathroom since buying the property in 2019 all of which should deliver peace of mind for astute buyers.

- Superb modern 1st floor flat
- Fitted and integrated kitchen
- 2 double bedrooms with storage
- Bathroom & en-suite shower
- Gas heating & double glazing
- Resident's parking to front

Amenities

29 Springkell Gardens is in a peaceful development only one mile from amenities on Nithsdale Road/Kildrostan Street where coffee houses, restaurants and independent retailers jostle for position. Maxwell Park and Pollok Country Park are both in close proximity of the property likewise Maxwell Park train station. Shields Road underground station is approximately one mile away and the nearby M77 connects the Southside of Glasgow to Scotland's motorway network.



Sat Nav:
29 Springkell Gardens, Pollokshields, G41 4BP

SS5154

*All measurements and distances are approximate.
Floorplans are for illustration purposes and may not be to scale.

For the full home report visit
www.corumproperty.co.uk



WE'RE **SOLD** ON
YOUR FUTURE



Corum Shawlands
247 Kilmarnock Road, Shawlands, G41 3JF

Tel: 0141 636 7588

Email: shawlands@corumproperty.co.uk

www.corumproperty.co.uk