



TRINITY HOUSE

31 LYNEDOCH STREET, PARK

www.corumproperty.co.uk





A rare opportunity to acquire a prominent and characterful property within the highly sought-after Park District of Glasgow. 31 Lynedoch Street forms part of the iconic Trinity Building, a handsome blonde sandstone building in an elevated position just minutes from Kelvingrove Park.

The Trinity Building on Lynedoch Street in Glasgow's prestigious Park District is a striking and historically significant landmark. Originally constructed in 1856–1857, it was designed by the renowned architect Charles Wilson as the Free Church College. With its grand Italianate design and prominent campanile tower, it quickly became a distinctive feature of the Glasgow skyline. The building's elevated position at the top of Woodlands Hill gives it a commanding presence over the surrounding West End.

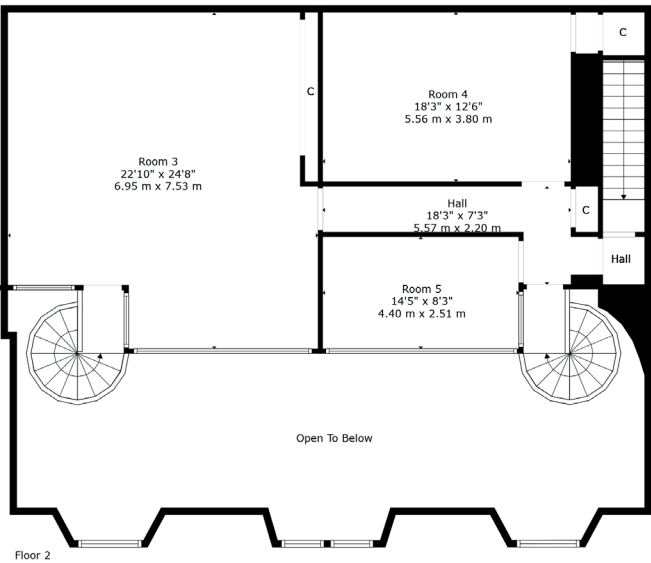
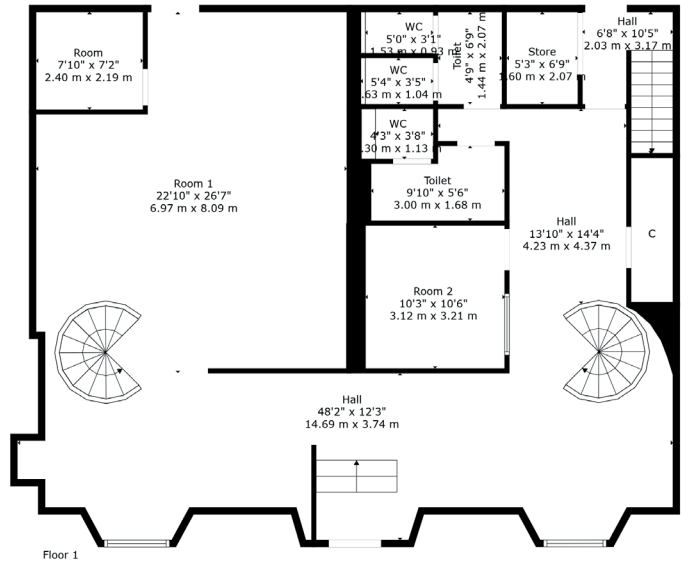
Following the reunification of the major Scottish Presbyterian denominations in 1929, the college became known as Trinity College, under the Church of Scotland. By 1935, it had merged with the University of Glasgow's Faculty of Divinity, continuing to operate as a centre of theological education until 1973. After the faculty relocated, the building was sold and its use as an academic institution came to an end.

In the mid-1980s, Trinity College was transformed into what is now known as Trinity House—a residential and mixed-use development. The sensitive conversion retained much of the building's external grandeur while repurposing the interior into a series of elegant flats and offices. Some original features, including a memorial stained-glass window and parts of the former library hall, remain in place, offering a nod to its ecclesiastical past.

Today, Trinity House is one of the most architecturally admired buildings in Glasgow's West End. The building is Category A listed, reflecting its national importance in terms of architecture and history.

Currently configured as high-quality office accommodation, the property presents an exciting opportunity for conversion to residential use, subject to the necessary planning consents. With generous proportions, traditional features, and an enviable location, the potential to create a stunning city residence or boutique development is substantial.





Arguably the most sought after and desirable location in Glasgow, is the Park.

The Park District area is bordered by the City Centre, Kelvingrove, Kelvingrove Park and Woodlands. Park Circus was built between 1855 and 1863. Many of the area's large townhouses which were converted to offices during the latter half of the 20th century are being returned to residential use. It was declared a Conservation Area in 1970.

One of the main attributes of the Park area is the accessibility of both the West End's and City Centre's wide range of amenities. Park offers a leafy tranquil surrounding yet is only minutes from access to the M8 at Charing Cross.

There is excellent local and private schooling in the area and an underground station at Kelvinbridge. It is also an ideal location for those looking to study at Glasgow University.

WE5419 | Sat Nav: 31 Lynedoch Street, Park, Glasgow, G3 6EF

For the full home report visit www.corumproperty.co.uk

* All measurements and distances are approximate Floorplans are for illustration purposes and may not be to scale.



WE'RE **SOLD** ON
YOUR FUTURE



Corum West End
82 Hyndland Road, Glasgow, G12 9UT

Tel: 0141 357 1888

Email: westendnq@corumproperty.co.uk

www.corumproperty.co.uk