



5 ATHOLE GARDENS

DOWANHILL

www.corumproperty.co.uk



13 | BEDROOMS
5 | BATHROOMS
1 | PUBLIC ROOM

5 Athole Gardens is a full four storey townhouse, built circa 1878-80, in the sought after address in Dowanhill, and enjoys views over the mature trees and residents’ gardens.

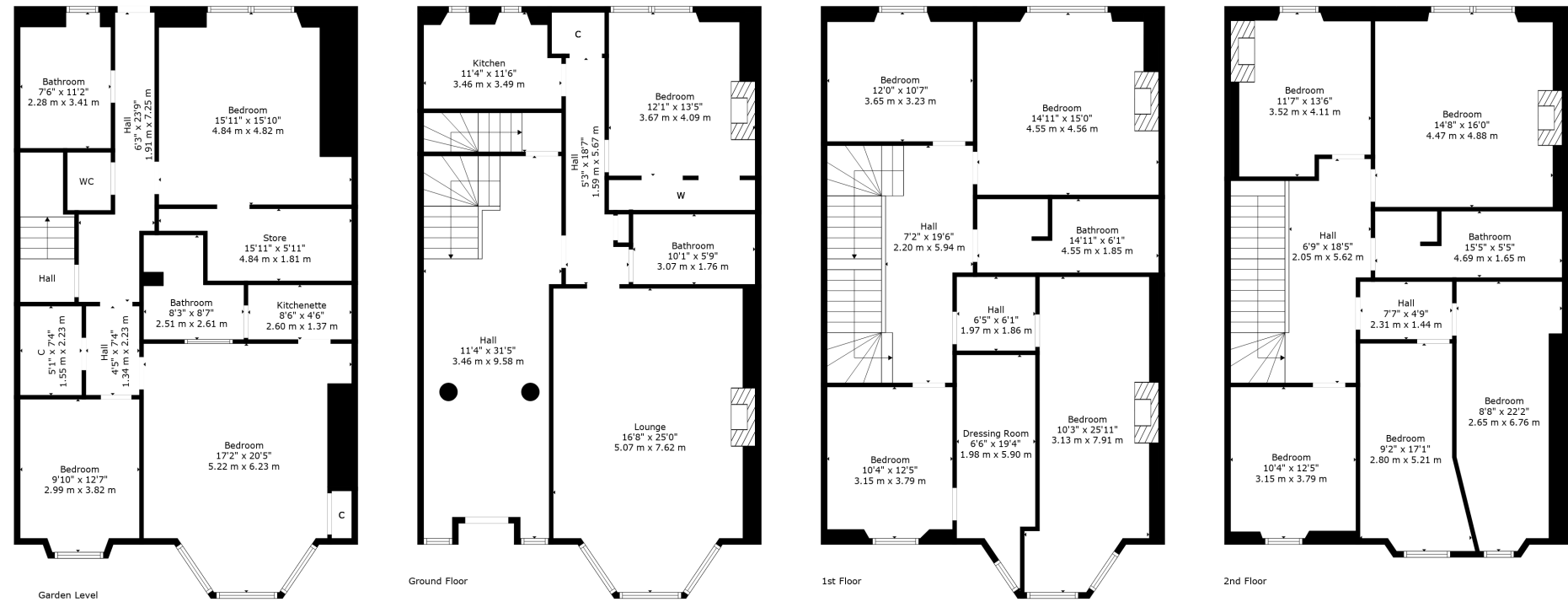
The generous accommodation extends over 14 apartments and retains period features, and is an amazing development opportunity.

Amenities

The leafy Dowanhill district is well placed for a wide selection of shops and amenities on both Byres Road and Hyndland Road. There are various supermarkets on Byres Road, including Waitrose, Marks & Spencer and a Tesco Metro. The famous Ashton Lane, just off Byres Road, offers a selection of bars, restaurants and the Grosvenor Cinema. At the top of Byres Road are the Botanic Gardens offering a beautiful green space in the city and greenhouses full of tropical plants. There are a number of bars, restaurants, cafés and delicatessens in the Hyndland Area, including Epicures and Peckhams.

Public transport is excellent, with bus routes operating on Byres Road and underground stations at Hillhead, Kelvinhall and Partick, where there is also a railway station. There are also good road links to the City Centre, Glasgow International Airport, and beyond.

Glasgow University is situated on University Avenue, just off Byres Road, and provides world class further education. There are a number of excellent comprehensive schools in the area as well as private schooling at The Glasgow Academy, The High School of Glasgow and Kelvinside Academy.



Sat Nav:
5 Athole Gardens, Dowanhill, Glasgow, G12 9AY

WE5426

*All measurements and distances are approximate.
Floorplans are for illustration purposes and may not be to scale.

For the full home report visit
www.corumproperty.co.uk



WE'RE **SOLD** ON
YOUR FUTURE



Corum West End
82 Hyndland Road, Glasgow, G12 9UT

Tel: 0141 357 1888

Email: westendenq@corumproperty.co.uk

www.corumproperty.co.uk