

CARLOGIE

27 THORN ROAD, BEARSDEN



corum

corumproperty.co.uk







4 | BEDROOMS 3 | BATHROOMS 3 | PUBLIC ROOMS

Exceptional early 20th Century Edwardian detached residence, retaining a wealth of period character and incorporating a self contained annexe, tucked away within a small and exclusive cul-de-sac in the admired Thorn district of Old Bearsden.

"Carlogie" is a truly exceptional early 20th Century Edwardian detached residence, enjoying what is arguably one of the finest positions within Old Bearsden. Tucked away within a small and exclusive cul-de-sac off Thorn Road, the property sits proudly on a substantial, level plot and is surrounded by beautifully established gardens, with a particularly impressive south-west facing rear aspect that enjoys day-long sunshine and a high degree of privacy.

The home is a striking example of its era, displaying exquisite external detailing including red sandstone mullions, a freshly painted render exterior and an attractive Rosemary tiled hipped roof. This is a property of real character and presence, complemented by mature, meticulously maintained grounds. To the front, a gravelled driveway is bordered by a raised lawn, neatly trimmed hedging and mature trees, providing both privacy and an impressive approach. The rear gardens are equally appealing, offering open outlooks, an expansive lawn, well-stocked planting beds, a substantial patio/terrace ideal for outdoor entertaining, and a traditional brick-built outhouse.

Internally, the accommodation is both expansive and highly versatile, retaining a wealth of period character while offering excellent flexibility for modern family living. A large and welcoming reception hallway sets the tone for the impressive interiors that follow. The principal living space is a magnificent open-plan lounge and dining room, featuring a dual aspect, with bay window formation, a focal point fireplace and stunning herringbone flooring, creating a bright and elegant environment for both everyday living and entertaining.

A second bay-windowed family room provides an additional formal or informal living space, again, centred around a feature fireplace. The dining-sized kitchen is well appointed with a range of base and wall-mounted units and includes an Aga, forming a warm and functional hub of the home. To the rear, a substantial utility room offers excellent additional workspace and storage, with a convenient WC also located on the ground floor.

A particularly notable feature is the self-contained annexe, which provides outstanding flexibility for multi-generational living, guest accommodation or potential home working. This area includes a separate kitchenette, lounge space, a large shower room and a double bedroom.

The upper levels continue to impress. A half-landing gives access to an additional bedroom and bathroom, while the main upper landing leads to four generously proportioned bedrooms. These are supported by a well-appointed family bathroom, featuring a four-piece suite. Of special note is the expansive billiard room, a superb additional space offering significant potential for adaptation to suit individual requirements, whether as a games room, studio or further living accommodation.

This particular section of Thorn Road is renowned for its collection of distinctive and substantial period homes, and "Carlogie" stands out as one of the most impressive. Combining timeless architectural elegance with generous, flexible accommodation and outstanding gardens, it represents a rare opportunity to acquire a landmark home, in one of Bearsden's most prestigious addresses.







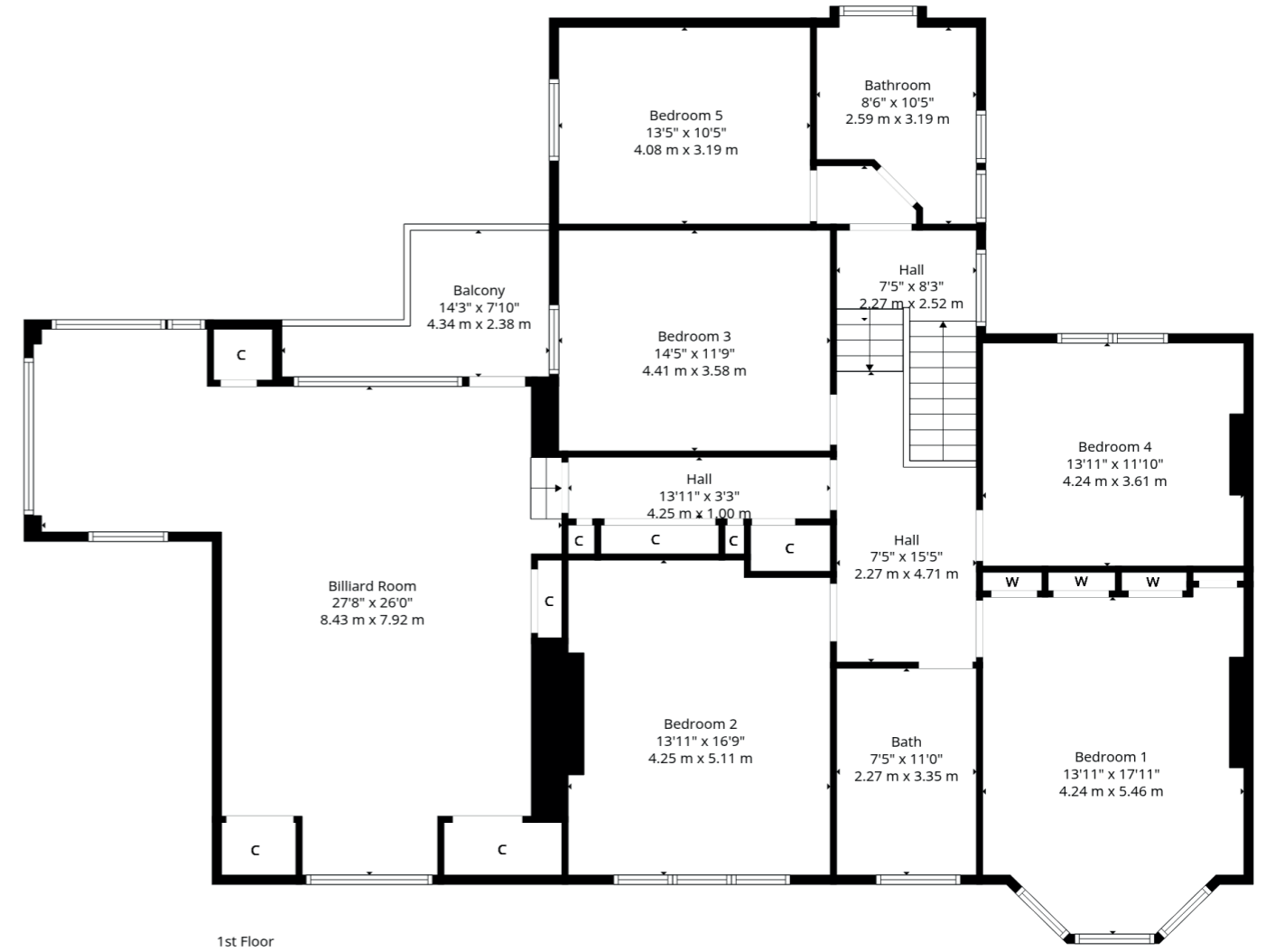
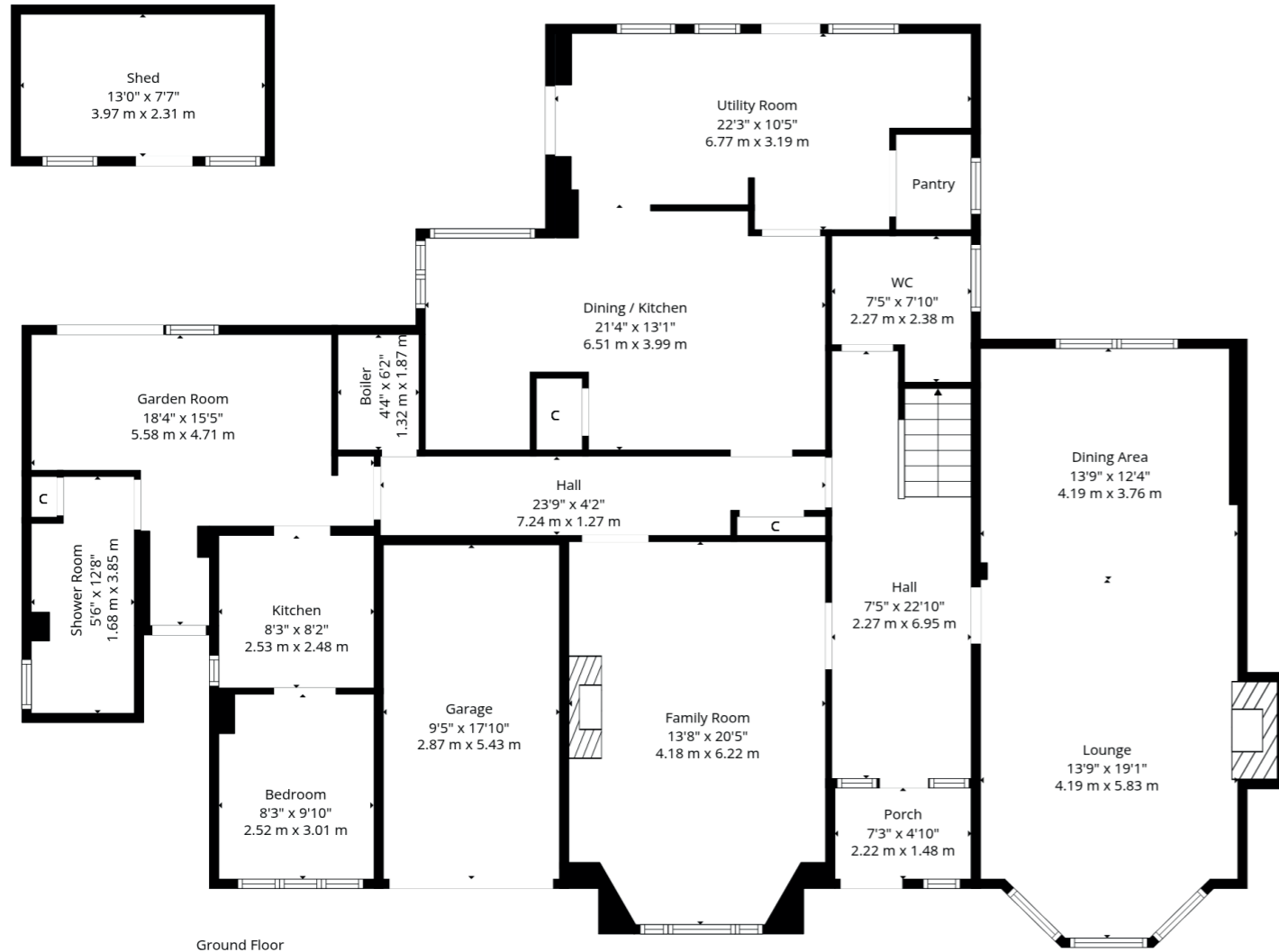












The suburb of Bearsden is one of Glasgow's most desired districts in which to reside. There are numerous highly acclaimed educational facilities at both Primary and Secondary levels and leisure facilities are plentiful with a choice of private and state gyms and clubs in abundance. Locally, there is an excellent selection of shops and services at Bearsden Cross along with restaurants, cafes and bars. There are excellent bus links nearby and train stations can be found at Hillfoot, Westerton and Bearsden providing regular services into Glasgow's West End and City Centre, including a service to Edinburgh. Glasgow Airport can be reached within twenty-five minutes off peak and, to the north of Bearsden is the world renowned Loch Lomond and The Trossachs National Park.





c o r u m

1 Canniesburn Toll, Bearsden G61 2QU

T: 0141 942 5888

E: bearsdenenq@corumproperty.co.uk

www.corumproperty.co.uk