



62
6
1

BE PART OF FINNIESTON'S MOST EXCITING NEW CHAPTER.



THE 945

Set within one of Glasgow's most sought-after neighbourhoods, The 945 combines striking contemporary architecture with the warmth of community living. Each apartment has been designed with comfort and style in mind, offering residents the very best of modern urban life.

The 945 is more than just a place to live
— it's a lifestyle choice.



Finnieston has a rich and fascinating past that reflects the story of Glasgow itself. Originally developed in the late 18th century, the area was named after the Reverend John Finnie, a prominent local minister. What began as a residential quarter soon became a hub of industry as Glasgow grew into one of the world's great port cities.

During the 19th and early 20th centuries, Finnieston played a central role in Glasgow's reputation as the "Second City of the Empire." Its shipyards, warehouses, and engineering works supported the booming Clyde industries, while generations of workers and families built a proud and close-knit community.





The 945



Be part of Finnieston's



Like many parts of Glasgow, Finnieston experienced decline in the mid-20th century as industry waned. However, in the last two decades, it has undergone a remarkable transformation. Today, the former warehouses and industrial buildings sit alongside contemporary architecture, creating a unique blend of old and new. Once known for shipbuilding, Finnieston is now celebrated for its restaurants, creative enterprises, and cultural vibrancy.

This layered history gives Finnieston its distinct character — a place where tradition and progress meet, shaping a neighbourhood that is as welcoming as it is dynamic.



Once an industrial hub, Finnieston has evolved into one of Glasgow's most vibrant and desirable districts. The area has become a destination in its own right and is recognised as a cultural hotspot. It boasts a vibrant mix of Michelin-recognised restaurants, independent cafés, stylish bars, and artisan bakeries, creating a buzz in the neighbourhood day and night.

09



Entertainment is never far away. Just a short walk from the development, the SEC Hydro and the Armadillo host international music acts, comedy, and live performances, while the Kelvingrove Art Gallery and Riverside Museum showcase Glasgow's world-class cultural heritage. For moments of calm, Kelvingrove Park offers leafy paths, open lawns, and the River Kelvin winding through its heart, making it a natural retreat in the middle of the city.

Finnieston also benefits from excellent connectivity. Residents enjoy easy access to Glasgow's business districts, universities, and transport hubs thanks to nearby bus and train stations, cycle routes, and road links. It is a location that combines the energy of city living with the convenience of being perfectly connected.





II





RETAIL & SIGNAGE

RETAIL & SIGNAGE





THE NEXT BIG NUMBER
IN FINNIESTON

**THE
945**

Site Plans and isometrics



14





15

**THE
945**

An architectural rendering of a modern, multi-story brick building. The ground floor features large glass windows and doors, with people walking on the sidewalk and bicycles parked. The upper floors have balconies with glass railings and some interior lighting visible. A dark blue semi-transparent box is overlaid on the center of the image, containing white text. The background shows a city street with other buildings and a cloudy sky.

The Apartment Collection

1ST TO 3RD FLOOR

RETAIL & SIGNAGE

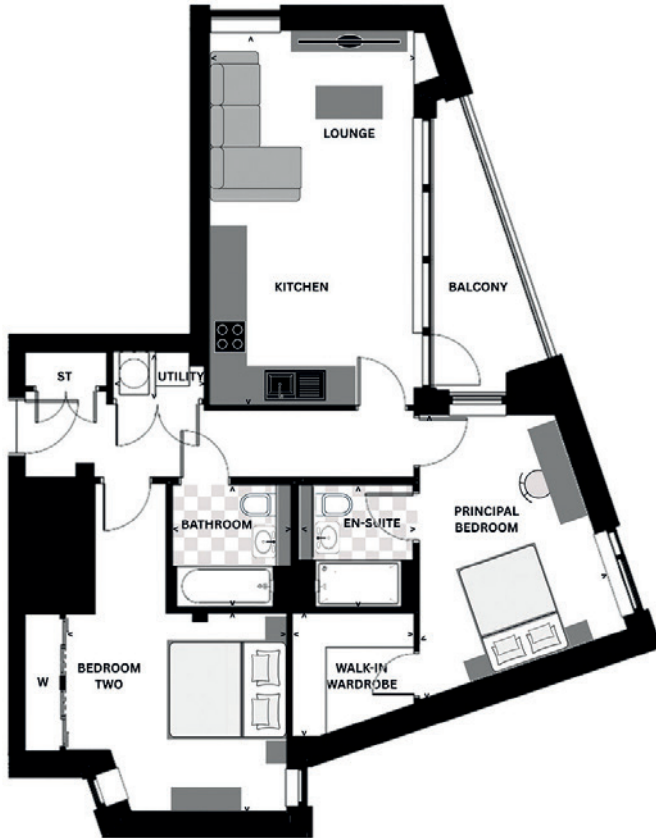
RETAIL & SIGNAGE

The Elliot

PLOTS: 53, 56 AND 59

Open Plan Living / Two-bedroom apartment
/ Principal bedroom with en-suite & walk-in wardrobe / Fitted wardrobe to Bedroom Two
/ Utility / Private balcony / 870 sq. ft



**LOUNGE/KITCHEN**

3.58Mx6.53M / 11' 8"x21' 5"

PRINCIPAL BEDROOM

3.52Mx4.99M / 11' 6"x16' 4"

EN-SUITE

2.00Mx2.13M / 6' 6"x6' 11"

WALK-IN WARDROBE

2.13Mx2.20M / 6' 11"x7' 2"

BEDROOM TWO

3.86Mx3.46M / 12' 8"x11' 4"

BATHROOM

2.06Mx2.13M / 6' 9"x6' 11"

UTILITY

1.60Mx0.82M / 5' 2"x2' 8"

PRIVATE BALCONY6.9M²

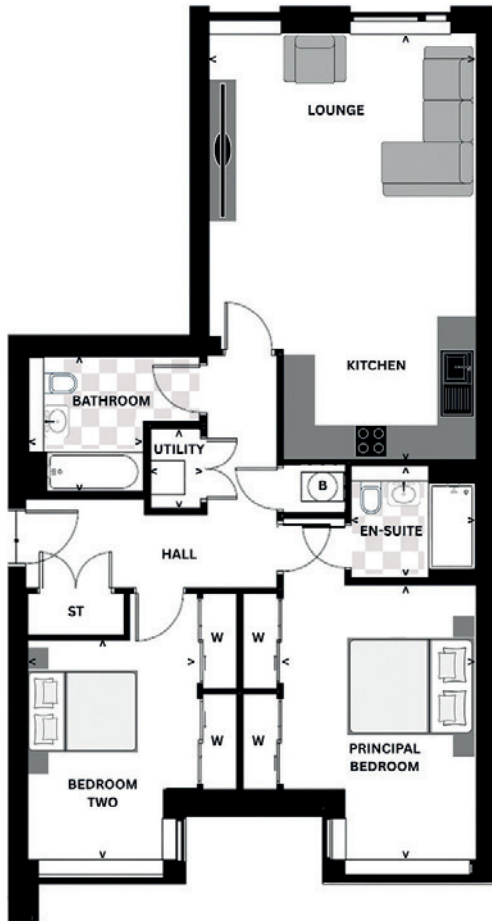
The Orr II

PLOTS: 8, 12, 23, 26, 34, 37, 43* & 46*

* = HANDED

Open Plan Living / Two-bedroom apartment
/ Principal bedroom with en-suite and fitted
wardrobes / Fitted wardrobes to Bedroom Two
/ Utility / 981 sq. ft



**LOUNGE/KITCHEN**

4.67Mx7.45M / 15'4"x24'5"

PRINCIPAL BEDROOM

3.38Mx4.81M / 11'1"x15'9"

EN-SUITE

2.16Mx1.95M / 7'1"x6'4"

BEDROOM TWO

2.96Mx3.84M / 9'8"x12'7"

BATHROOM

2.00Mx2.35M / 6'6"x7'8"

UTILITY

0.88Mx1.40M / 2'10"x4'7"

The Orr

PLOTS: 4, 20, 31 & 40*

* = HANDED

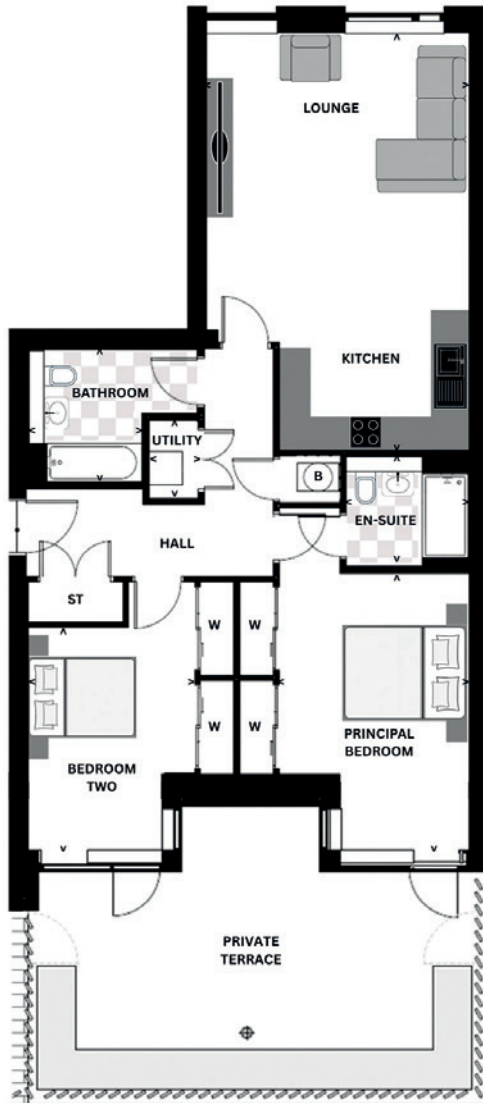
Open Plan Living / Two-bedroom apartment
Principal bedroom with en-suite and fitted wardrobes / Fitted wardrobes to Bedroom Two / Utility / Private Terrace / 981 sq. ft



ELLIOT
STREET

ARGYLE
STREET

FINNIESTON
STREET

**LOUNGE/KITCHEN**

4.67Mx7.45M / 15'4"x24'5"

PRINCIPAL BEDROOM

3.38Mx4.81M / 11'1"x15'9"

EN-SUITE

2.16Mx1.95M / 7'1"x6'4"

BEDROOM TWO

2.96Mx3.84M / 9'8"x12'7"

BATHROOM

2.00Mx2.35M / 6'6"x7'8"

UTILITY

0.88Mx1.40M / 2'10"x4'7"

PRIVATE TERRACE

Please ask Sales Consultant
for dimensions of terrace as
they may vary from plot to plot

The Ashton

PLOTS: 2, 6 & 10

Open Plan Living / Two-bedroom apartment
Juliette balcony from Lounge / Principal
bedroom with en-suite and fitted wardrobe
/ Fitted wardrobe to Bedroom Two / Utility
/ 930 sq. ft



LOUNGE/KITCHEN/DINING

6.30Mx5.80M / 20'8"x19'0"

PRINCIPAL BEDROOM

3.07Mx3.49M / 10'0"x11'5"

EN-SUITE

1.80Mx2.16M / 5'10"x7'1"

BEDROOM TWO

3.87Mx3.09M / 12'8"x10'1"

BATHROOM

2.00Mx2.15M / 6'6"x7'0"

UTILITY

1.43Mx1.45M / 4'8"x4'9"

25



The Quay II

PLOTS: 5 & 9

Open Plan Living / Two-bedroom apartment
/ Principal bedroom with en-suite and fitted
wardrobe / Fitted wardrobe to Bedroom Two
/ Utility / Private balcony/ 851 sq. ft



**LOUNGE/KITCHEN/DINING**

4.14Mx5.44M / 13'7"x17'10"

PRINCIPAL BEDROOM

3.93Mx4.97M / 12'10"x16'3"

EN-SUITE

1.72Mx1.94M / 5'7"x6'4"

BEDROOM TWO

3.81MMx3.00M / 12'6"x9'10"

BATHROOM

2.68Mx1.77M / 8'9"x5'9"

UTILITY

1.12Mx1.08M / 3'8"x3'6"

PRIVATE BALCONY

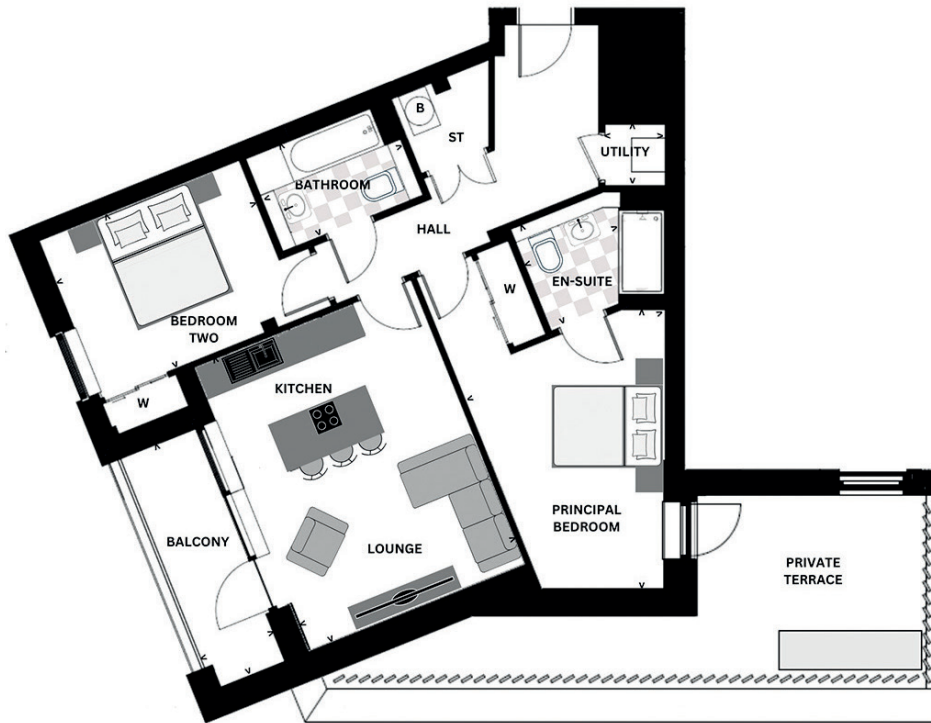
1.41Mx4.41M / 4'7"x14'5"

The Quay

PLOT: 1

Open Plan Living / Two-bedroom apartment
/ Principal bedroom with en-suite and fitted
wardrobe / Fitted wardrobe to Bedroom Two
/ Utility / Private balcony from Lounge / Private
terrace from Principal Bedroom / 851 sq. ft



**LOUNGE/KITCHEN/DINING**

4.14Mx5.44M / 13'7"x17'10"

PRINCIPAL BEDROOM

3.89Mx4.97M / 12'9"x16'3"

EN-SUITE

1.76Mx1.94M / 5'9"x6'4"

BEDROOM TWO

3.82Mx3.00M / 12'6"x9'10"

BATHROOM

2.68Mx1.77M / 8'9"x5'9"

UTILITY

1.12Mx1.08M / 3'8"x3'6"

PRIVATE BALCONY

1.22Mx4.41M / 3'11"x14'5"

PRIVATE TERRACE22.9M²

The Argyle

PLOTS: 3, 7, 11, 19, 22, 25, 30, 33, 36,
41, 44, 47, 52, 55 & 58

Open Plan Living / One-bedroom apartment
/ Fitted wardrobe within bedroom / Private
balcony accessed from Lounge / 544 sq. ft



LOUNGE/KITCHEN/DINING

4.36Mx5.27M / 14'3"x17'3"

BEDROOM

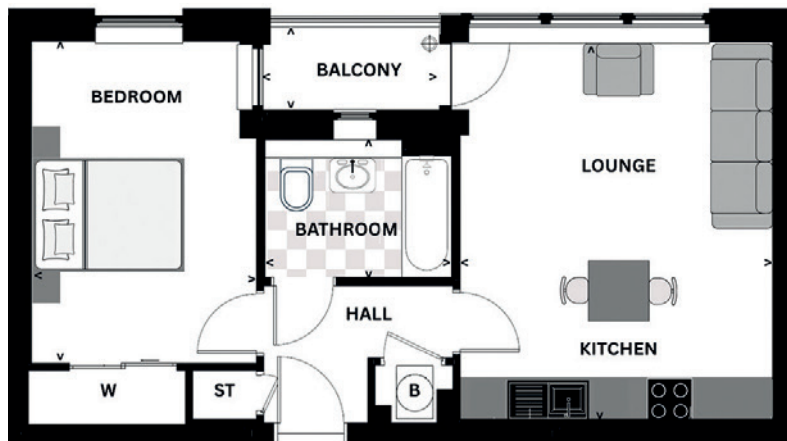
3.14Mx4.50M / 10'3"x14'9"

BATHROOM

2.61Mx1.99M / 8'6"x6'6"

PRIVATE BALCONY

2.37Mx1.17M / 7'9"x3'10"



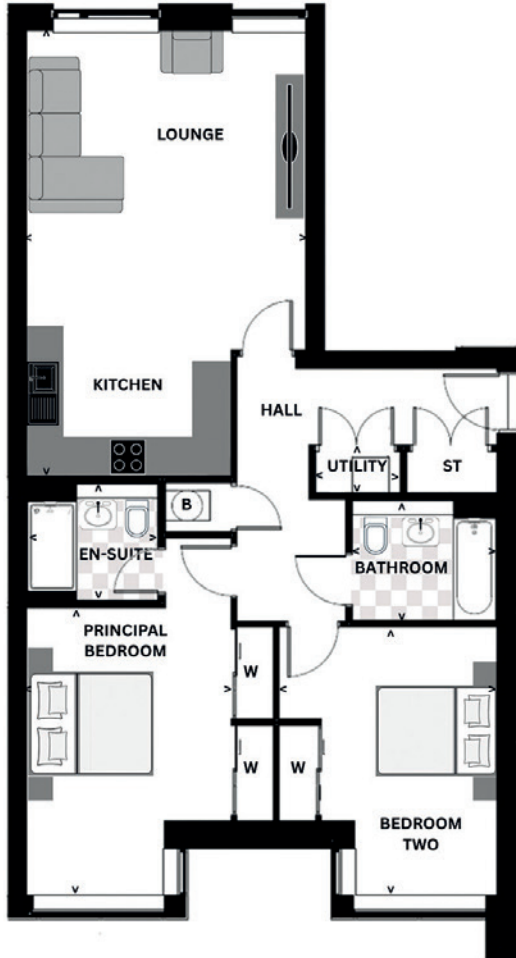
The Clyde II

PLOTS: 21, 24, 32, 35, 45* & 48*, 54 & 57

* = HANDED

Open Plan Living / Two-bedroom apartment/
Principal bedroom with en-suite and fitted
wardrobes / Fitted wardrobe to Bedroom Two
/ Utility / 983 sq. ft



**LOUNGE/KITCHEN**

4.65Mx7.45M / 15'3"x24'5"

PRINCIPAL BEDROOM

3.40Mx4.81M / 11'2"x15'9"

EN-SUITE

2.16Mx1.95M / 7'1"x6'4"

BEDROOM TWO

3.62Mx4.48M / 11'10"x14'8"

BATHROOM

2.38Mx2.00M / 7'9"x6'6"

UTILITY

1.42Mx0.70M / 4'8"x2'3"

The Clyde

PLOTS: 18, 29, 42* & 51

* = HANDED

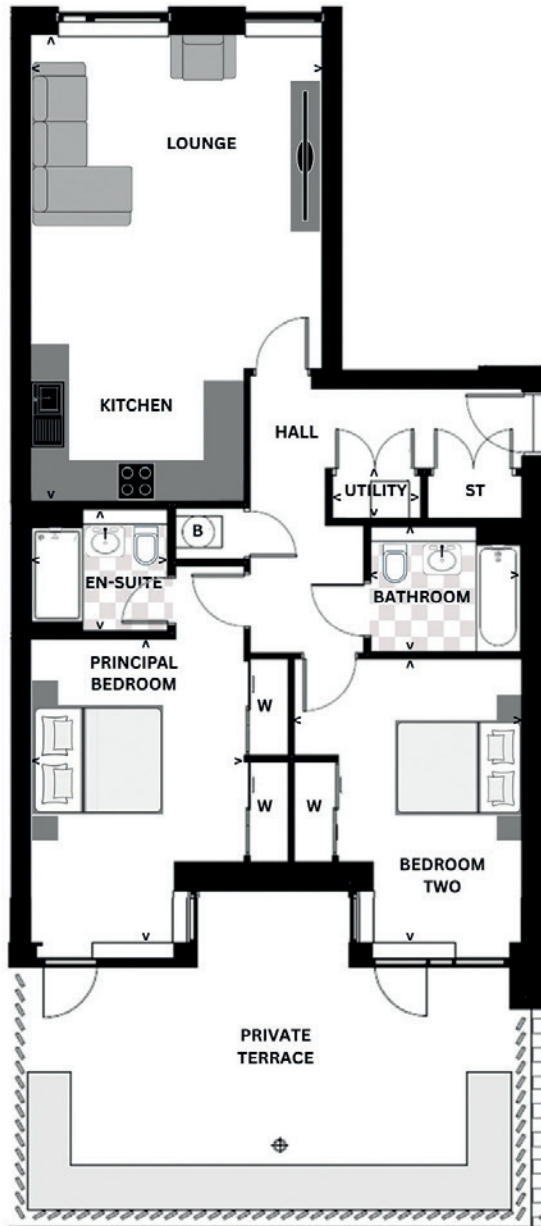
Open Plan Living / Two-bedroom apartment
/ Principal bedroom with en-suite and fitted wardrobes / Fitted wardrobe to Bedroom Two
/ Utility / Private Terrace accessed from Principal Bedroom and Bedroom Two / 983 sq. ft



ELLIOT
STREET

ARGYLE
STREET

FINNIESTON
STREET

**LOUNGE/KITCHEN**

4.65Mx7.45M / 15'3"x24'5"

PRINCIPAL BEDROOM

3.40Mx4.81M / 11'2"x15'9"

EN-SUITE

2.20Mx1.95M / 7'2"x6'4"

BEDROOM TWO

3.62Mx4.48M / 11'10"x14'8"

BATHROOM

2.38Mx2.00M / 7'9"x6'6"

UTILITY

1.42Mx0.70M / 4'8"x2'3"

PRIVATE TERRACE

Please ask Sales Consultant
for dimensions of terrace as
they may vary from plot to plot

**THE
945**



The Penthouse Collection

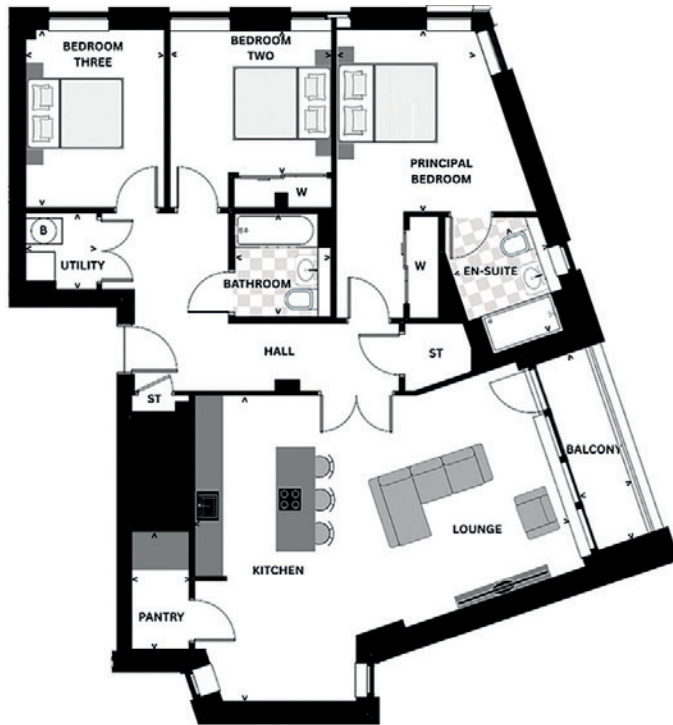
4TH FLOOR

The Mackintosh

PLOT: 61

Open Plan Living / Three-bedroom apartment
/ Principal bedroom with en-suite and fitted wardrobe / Fitted wardrobe to Bedroom Two
/ Pantry off kitchen / Utility / Private balcony
/ 1,208 sq. ft



**LOUNGE/KITCHEN/DINING**

7.51Mx6.20M / 24'7"x20'4"

PANTRY

1.17Mx2.40M / 3'10"x7'10"

PRINCIPAL BEDROOM

2.82Mx3.69M / 9'2"x12'1"

EN-SUITE

2.02Mx2.33M / 6'7"x7'7"

BEDROOM TWO

3.28Mx2.87M / 10'9"x9'5"

BEDROOM THREE

2.82Mx3.58M / 9'3"x11'8"

BATHROOM

1.95Mx2.11M / 6'4"x6'11"

UTILITY

1.45Mx1.57M / 4'9"x5'1"

PRIVATE BALCONY

1.06Mx3.98M / 3'5"x13'0"

The Botanic

PLOTS: 15, 27*, 28, 38*,
39, 49*, 50 & 60*

* = HANDED

Open Plan Living / Three-bedroom apartment
/ Principal bedroom with en-suite and fitted
wardrobe / Fitted wardrobe to Bedroom Two
/ Utility / Private Terrace / 1,053 sq. ft



ELLIOT
STREET

ARGYLE
STREET

FINNIESTON
STREET

LOUNGE/KITCHEN/DINING

7.83Mx4.28M / 25'8"x14'0"

PRINCIPAL BEDROOM

4.12Mx3.19M / 13'6"x10'5"

EN-SUITE

2.18x1.95M / 7'2"x6'4"

BEDROOM TWO

2.97Mx3.45M / 9'9"x11'4"

BEDROOM THREE

2.70Mx3.41M / 8'10"x11'2"

BATHROOM

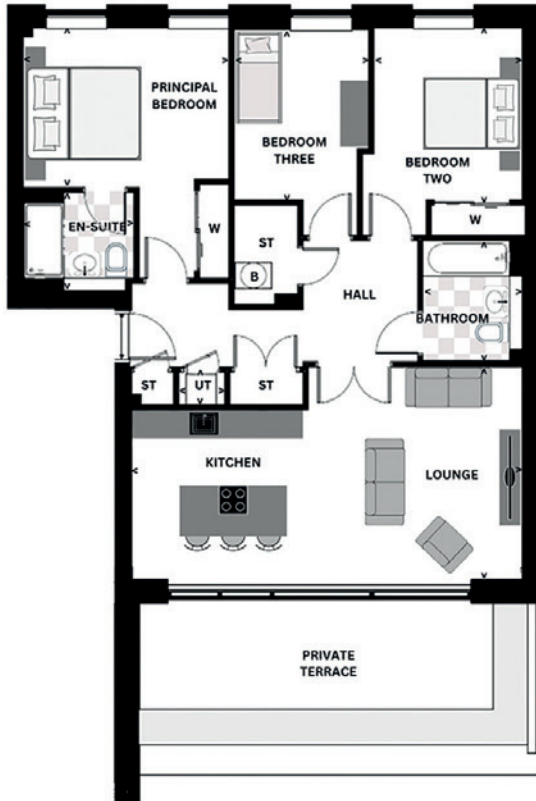
1.97Mx2.40M / 6'5"x7'10"

UTILITY

0.92Mx0.65M / 3'0"x2'1"

PRIVATE TERRACE

23.6M²



The Kelvin

PLOT: 13

Open Plan Living / Two-bedroom apartment
/ Principal bedroom with en-suite and walk-in wardrobe / Fitted wardrobe to Bedroom Two
/ Utility / Private Balcony / 952 sq. ft



ELLIOT
STREET

ARGYLE
STREET

FINNIESTON
STREET

**LOUNGE/KITCHEN/DINING**

5.79Mx6.65M / 19'0"x21'9"

PRINCIPAL BEDROOM

3.79Mx4.16M / 12'5"x13'7"

EN-SUITE

1.94Mx2.39M / 6'4"x7'10"

WALK-IN WARDROBE

1.67Mx1.68M / 5'6"x5'6"

BEDROOM TWO

3.93Mx3.16M / 12'10"x10'4"

BATHROOM

2.70Mx1.94M / 8'10"x6'4"

UTILITY

1.09Mx1.41M / 3'7"x4'7"

PRIVATE BALCONY

1.59Mx4.92M / 5'2"x16'1"

The Byres

PLOT: 14

Open Plan Living / Three-bedroom apartment
/ Principal bedroom with en-suite and fitted
wardrobe / Fitted wardrobe to Bedroom Two
/ Utility / Juliette balcony off Lounge / 1,109 sq. ft



**LOUNGE/KITCHEN/DINING**

6.44Mx5.11M / 21'1"x16'9"

PRINCIPAL BEDROOM

4.27Mx3.40M / 14'0"x11'2"

EN-SUITE

2.25Mx1.80M / 7'4"x5'10"

BEDROOM TWO

3.96Mx2.70M / 12'11"x8'10"

BEDROOM THREE

4.77Mx2.80M / 15'7"x9'2"

BATHROOM

2.23Mx2.00M / 7'4"x6'6"

UTILITY

1.01Mx1.42M / 3'3"x4'8"



The background of the entire page is a light green, semi-transparent aerial photograph of a modern architectural complex. The complex features a central courtyard with a curved, paved walkway and several rectangular buildings. The surrounding area is lush with green trees and vegetation. The overall aesthetic is clean, modern, and nature-oriented.

The Penthouse Collection

5TH FLOOR





**THE
945**

BE MORE THAN JUST A NUMBER

The Kelvin Grove

PLOT: 16

Open Plan Living / Two-bedroom apartment
/ Principal bedroom with en-suite and walk-in wardrobe / Fitted wardrobe to Bedroom Two
/ Utility / Private Balcony / 952 sq. ft



**LOUNGE/KITCHEN/DINING**

5.79Mx6.65M / 19'0"x21'9"

PRINCIPAL BEDROOM

3.79Mx4.16M / 12'5"x13'7"

EN-SUITE

1.94Mx2.39M / 6'4"x7'10"

WALK-IN WARDROBE

1.67Mx1.68M / 5'6"x5'6"

BEDROOM TWO

3.93Mx3.16M / 12'10"x10'4"

BATHROOM

2.70Mx1.94M / 8'10"x6'4"

UTILITY

1.09Mx1.41M / 3'7"x4'7"

PRIVATE BALCONY

1.59Mx4.92M / 5'2"x16'1"

The Vincent

PLOT: 62

Open Plan Living / Three-bedroom apartment
/ Principal bedroom with en-suite, walk-
in wardrobe and private balcony / Fitted
wardrobe to Bedroom Two / Utility / Private
Rooftop Garden / 1,332 sq. ft



This exceptional penthouse apartment offers a rare opportunity to enjoy luxury living at an elevated level. Designed with space, light and sophistication in mind, the apartment features three beautifully proportioned double bedrooms and outstanding outdoor amenities.

The principal suite is truly impressive, boasting a generous walk-in wardrobe, a sleek en-suite shower room, and direct access to a private balcony — the perfect personal oasis. The second bedroom enjoys dual aspect views over the city, enhancing the sense of openness, and is complemented by fitted wardrobes.

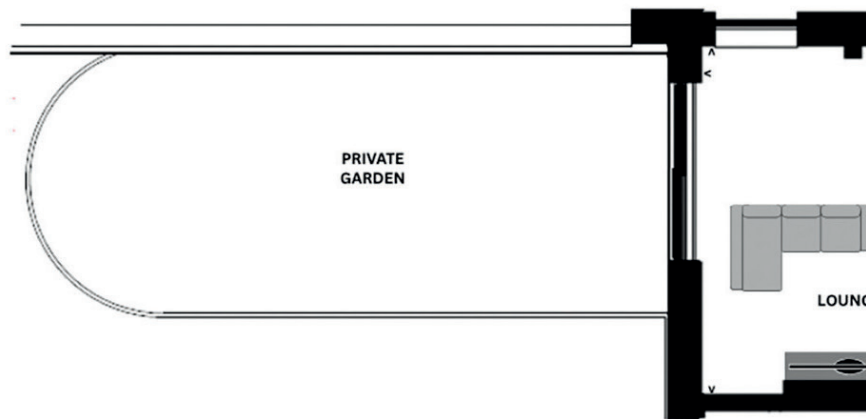
At the heart of the apartment lies a spacious open-plan lounge, dining and kitchen, ideal for modern living and entertaining. The kitchen is finished with a stylish central island, creating a striking focal point and a perfect space for casual dining.

The lounge extends seamlessly onto a private rooftop garden, offering an exceptional outdoor setting for relaxation, socialising, and enjoying panoramic surroundings.

A beautifully appointed main bathroom and a discreet utility area are conveniently located off the hallway, ensuring everyday practicality matches the apartment's refined design.

This remarkable penthouse combines expansive interiors with exclusive outdoor space, delivering contemporary living at its most luxurious.

The Vincent





LOUNGE/KITCHEN/DINING

7.28Mx5.24M / 23'10"x17'2"

PRINCIPAL BEDROOM

3.86Mx4.24M / 12'8"x13'11"

EN-SUITE

3.38Mx2.28M / 11'1"x7'6"

WALK-IN WARDROBE

1.46Mx4.30M / 4'9"x14'1"

BEDROOM TWO

5.14Mx3.41M / 16'10"x11'2"

BEDROOM THREE

4.21Mx3.83M / 13'9"x12'6"

BATHROOM

2.00Mx2.32M / 6'6"x7'7"

UTILITY

0.75Mx1.93M / 2'5"x6'3"

PRIVATE BALCONY FROM

PRINCIPAL BEDROOM

1.36Mx3.98M / 4'5"x13'0"

PRIVATE ROOFTOP GARDEN

9.56Mx3.88M / 31'4"x12'8"

The Finnie

PLOT: 17

Open Plan Living / Three-bedroom apartment
Principal bedroom with en-suite and fitted wardrobe / Fitted wardrobes to Bedrooms Two & Three / Utility / Juliette balcony off Kitchen / Private Rooftop Garden accessed from Bedroom Two / 1,238 sq. ft



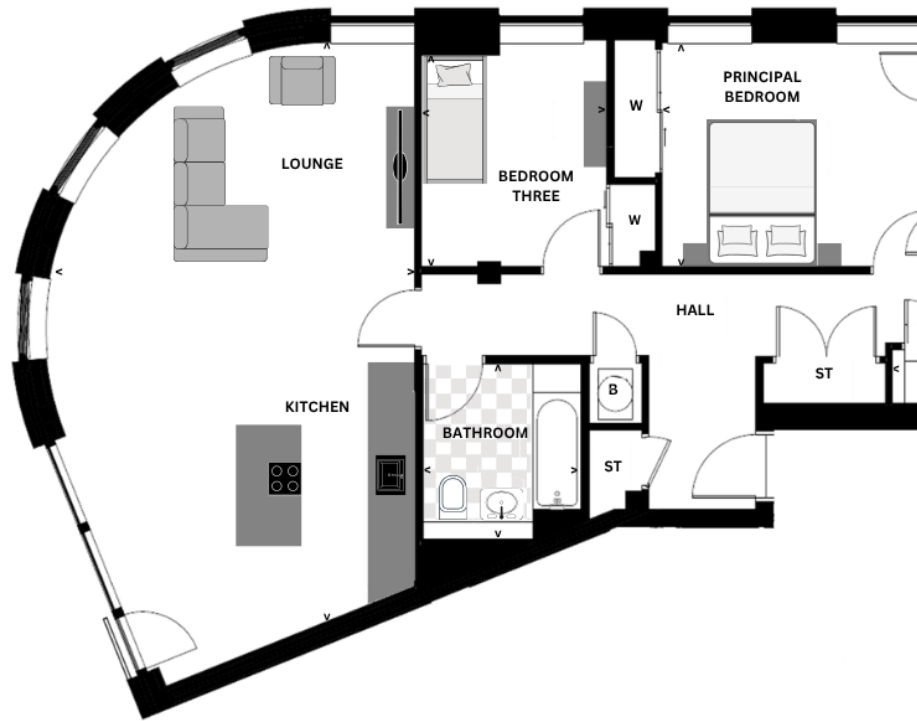
This outstanding three-bedroom penthouse offers an impressive combination of space, versatility and elevated living. The spacious open-plan lounge, dining and kitchen area is beautifully designed, with an abundance of windows drawing in natural light and creating a bright, contemporary atmosphere. The kitchen is further enhanced by a stylish central island – perfect for casual dining and entertaining – while a charming Juliette balcony off the kitchen adds an elegant feature.

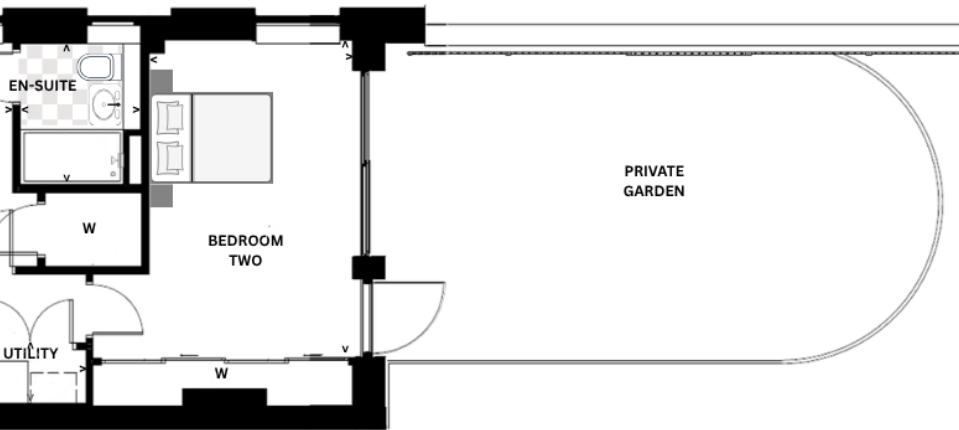
The principal bedroom provides a luxurious private escape, complete with fitted wardrobes and a stylish en-suite shower room. Bedroom two offers exceptional flexibility and can serve as a generous double bedroom or an additional lounge, with direct access to a private rooftop garden – a truly unique outdoor sanctuary ideal for relaxing or hosting guests.

A beautifully appointed main bathroom and a separate utility are conveniently positioned off the hallway, ensuring practicality is seamlessly integrated with style.

Offering rare outdoor space and thoughtfully designed interiors, this remarkable penthouse delivers sophisticated living at its finest.

The Finnie





LOUNGE/KITCHEN/DINING

5.32Mx8.37M / 17'5"x27'5"

PRINCIPAL BEDROOM

3.90Mx3.26M / 12'9"x10'8"

EN-SUITE

1.75Mx2.05M / 5'9"x6'8"

BEDROOM TWO

2.97Mx4.62M / 9'9"x15'2"

BEDROOM THREE

2.70Mx3.08M / 8'10"x10'1"

BATHROOM

2.31Mx2.54M / 7'6"x8'4"

UTILITY

1.62Mx0.77M / 5'4"x2'6"

PRIVATE ROOFTOP GARDEN

8.06Mx4.46M / 26'5"x14'7"

**THE
945**

BE MORE THAN
JUST A NUMBER



The Finer Details



Contemporary white painted internal doors throughout with black ironmongery

Fitted and walk-in wardrobes within bedrooms will be fitted with complementing shelves and hanging rails.

White satinwood paint finish to all woodwork and doors.

White emulsion paint finish to all walls and ceilings

High-performance Alu-clad windows and doors

BT master point located within meter cupboard

LED downlighters to Kitchen, Bathroom, En-suite and Hall

USB sockets to Lounge and Principal Bedroom

High-efficiency electric boiler to all apartments, with Myson compact white radiators to all locations.

Smoke, heat and carbon dioxide detectors and monitors, as required

Audio & video door entry system with handset in hall

Coloured glass balustrade to Juliette balcony of Styles C, K & L.

Plain glass balustrade to balconies of Styles A, D, D1, E & F.

Painted metal balustrade to 1st floor terraces of Styles D1, B1, B1*, N1 & N1*,

5th floor communal rooftop garden and private rooftop gardens of Styles J & L.

Brick wall to 4th Floor terraces of Styles G & G* and balconies of Styles H & J

Fire suppression system (sprinklers) to all apartments

COMMUNAL AREAS

Elevator access to all apartments

High-quality finishes to the entrance and hallways

63 Hard and soft landscaping designs by Landscape Architect with high-quality finishes and planting designed to complement the buildings architecture.

ENERGY EFFICIENCY

All apartments will be heated using high-performance electric boilers

All lighting will be low-energy as standard

Smart meter fitted as standard

All wash hand basin taps and showers will be fitted with flow limiters to reduce water consumption

Improvement to building fabric, high-performance windows, increased insulation to walls and floors providing an improvement to both thermal and acoustic performance

Specification

Luxury German Kitchen furniture with handles
Luxury German Kitchen furniture handleless
Luxury German Kitchen furniture, handleless with under counter lighting
25mm Laminate work surfaces and full height laminate splashback to the underside of wall units 150mm upstand in all other areas.
25mm Laminate work surfaces and full height laminate splashback to the underside of wall units
20mm Quartz work surface with full height feature laminate splashback to the underside of wall units
Blanco single bowl sink with drainer and black feature mixer tap
Blanco single bowl undermount sink with black feature mixer tap
Blanco single bowl undermount sink with black Quooker tap
Sensio Velos LED lighting under wall units
LED surface mounted spotlights on panel below wall units with remote control to adjust lighting tone.
Appliances:
Bosch 60cm 4-zone induction hob
Elica 60cm 4-zone vented induction hob
Elica 80cm 4 zone vented Induction hob
Elica 60cm telescopic Chimney Hood
Elica 90cm telescopic Chimney Hood
Bosch Single Oven
Siemens Single Oven
Bosch Microwave
Bosch Combi Microwave
Siemens Combi Microwave
Bosch Integrated Dishwasher
Siemens Integrated Dishwasher
Bosch Integrated 70/30 Fridge Freezer
Siemens Integrated 70/30 Fridge Freezer
Bosch Integrated Washing Machine
Pantry shelved

KITCHENS

The Elliot	The Orr II	The Orr	The Ashton	The Quay II	The Quay	The Argyle	The Mackintosh	The Botanic	The Kelvin	The Kelvin Grove	The Vincent	The Byres	The Finnie	The Clyde II	The Clyde
●	●	●	●	●	●	●								●	●
							●	●	●			●			
●	●	●									●	●	●		
			●	●	●	●								●	●
							●	●	●	●	●	●	●		
●	●	●	●	●	●	●								●	●
							●	●	●			●			
										●	●		●		
●	●	●	●	●	●	●								●	●
							●	●	●	●	●	●	●		
●	●	●				●								●	●
			●	●	●		●	●	●			●			
●	●	●	●	●	●	●				●	●			●	●
							●	●	●	●	●	●	●		
●	●	●	●	●	●	●								●	●
●	●	●	●	●	●	●		●	●	●	●	●	●		
							●	●	●	●	●	●	●		
						●									
							●								

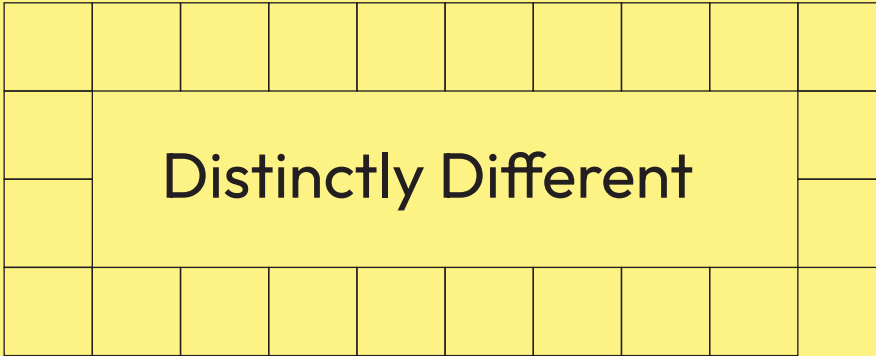
		The Elliot	The Orr II	The Orr	The Ashton	The Quay II	The Quay	The Argyle	The Mackintosh	The Botanic	The Kelvin	The Kelvin Grove	The Vincent	The Byres	The Finnie	The Clyde II	The Clyde
EN-SUITE	Bespoke vanity arrangement with feature mirror, lighting and concealed storage space	●	●	●	●	●	●			●	●	●	●	●	●	●	●
	White Laufen Pro s basin with black mixer tap	●	●	●	●	●	●		●	●	●	●	●	●	●	●	●
	White Laufen Pro wall hung WC with black flush plate	●	●	●	●	●	●		●	●	●	●	●	●	●	●	●
	Undermount vanity unit								●								
	White shower tray, black trim sliding door and black thermostatic shower	●	●	●	●	●	●									●	●
	White shower tray, black trim sliding door and black thermostatic shower valve with integrated outlet and handset with fixed overhead shower head									●	●	●	●	●	●	●	
	Selected Verona wall tiles to designated areas	●	●	●	●	●	●		●	●	●	●	●	●	●	●	●
	Black shaver socket	●	●	●	●	●	●		●	●	●	●	●	●	●	●	●
	Towel radiator	●	●	●	●	●	●		●	●	●	●	●	●	●	●	●
	LED downlighters to ceiling	●	●	●	●	●	●		●	●	●	●	●	●	●	●	●
	BATHROOM	Bespoke vanity arrangement with feature mirror, lighting and concealed storage space								●							
White Laufen Pro s basin with black mixer tap		●	●	●	●	●	●	●	●	●	●	●	●	●	●	●	●
Undermount vanity unit								●									
White Laufen Pro wall hung WC with black flush plate		●	●	●	●	●	●	●	●	●	●	●	●	●	●	●	●
White Carron profile bath provided with black filler tap		●	●	●	●	●	●	●	●	●	●	●	●	●	●	●	●
Black thermostatic shower with black trim over-bath screen								●									
Selected Verona wall tiles to designated areas		●	●	●	●	●	●	●	●	●	●	●	●	●	●	●	●
Black Shaver Socket								●									
Towel radiator								●									
LED downlighters to ceiling		●	●	●	●	●	●	●	●	●	●	●	●	●	●	●	●
WARDROBES	Walk-in wardrobe with white door and black ironmongery - Principal Bedroom	●									●	●					
	Walk-in wardrobe with sliding doors* - Principal Bedroom												●				
	Fitted wardrobe with sliding doors* - Principal Bedroom		●	●	●	●	●	●	●	●				●	●	●	●
	Wardrobe with white door and black ironmongery - Principal Bedroom														●		
	Fitted wardrobe with sliding doors* - Bedroom 2	●	●	●	●	●	●		●	●	●	●	●	●	●	●	●
	Fitted wardrobe with sliding doors* - Bedroom 3														●		

* Sliding wardrobe doors will be stone in colour as standard

	Why choose Westpoint Homes?									







For 40 years, we've been building homes of the highest quality, using the finest materials and superior craftsmanship.

68

Every Westpoint development is designed in sympathy with the architectural character and style of its surroundings – so your new home adds to the richness of the community.

We understand that every home should be unique to its owner. That's why we offer a dedicated service with our sales consultant assisting you in choosing all of your finishes throughout which emphatically says it's yours – distinctly yours*.

*Dependant on build stage



	<h1>10 Great Reasons</h1>									

You can expect many great things from our new-build homes. Here are just ten of them.

Modern building standards

We invest time and resources to take your home beyond the industry standards of construction, design, and energy efficiency.*

Fixed price

The price you see is the price you pay, all without the added stress of a closing date, which is often part of the second-hand property buying process.

Brand new homes

Move in and enjoy without months of DIY. If you purchase early in the build stage, you can select your own kitchen.

Designed to suit your lifestyle

On average, 17% of the space in older properties lies unused. In a typical £200,000 house, as much as £34,000 could be going to waste. We design your new-build home to provide flexible, usable space to fit the way you live your life.

Safe and secure

Your new home's structure, ventilation, sound insulation, electrical system, and fire safety are all designed to meet today's strict building standards, meaning that you, and your loved ones, are safe and secure.

High specification

We include many features in the price, such as a high-quality fitted kitchen, appliances from leading manufacturers, and en-suites to Principal bedrooms.

71

Energy efficient homes

Significant financial savings every year – that is the benefit you can expect from the reduced energy bills in your new home. In fact, new homes are typically six times more energy efficient than older properties, and generate less than 60% of the CO₂, so you are helping to preserve the environment.

Your guarantees

Your Westpoint home comes with the reassurance of a ICW guarantee. The standards are exacting, and detailed

ICW inspections take place as your new home is being built. Second-hand homes put the burden of repairs on you – the buyer.

Building new communities

Our locations and designs make the most of streetscape and landscape areas, lending instant kerb appeal and sense of place. The result is a neighbourhood where you will instantly feel welcome, and one that will be equally appealing to buyers, should you ever wish to sell.

The personal touch

We keep in touch with you at every stage of your build, so you'll always know the progress of your new home. Our Site Manager will personally make sure all aspects of your new home are built to our high standards, and that it's examined at the key stages by an ICW inspector.

*In line with energy efficient recommendations at time of build.

	Contact					

For sales information on the 945,
please telephone 0800 9174 945

Directions to development
SAT NAV G3 8JG



Disclaimer

The particulars here in have been prepared for the benefit of intending purchasers. However, the information contained is intended as a preliminary guide only. Westpoint Homes reserves the right to amend or vary specifications. Dimensions of rooms are measured where arrows indicate. All sizes are indicative and subject to change during construction. Nothing in this brochure shall constitute or form part of any contract. The computer generated images used in this brochure are indicative only. All measurements and distances are approximate and for guidance only. Floor plans and images are for illustration purposes and may not be to scale.



**CONSUMER
CODE FOR
HOME BUILDERS**



THE
945

THE945.NET

Westpoint
HOMES 